

www.all-rite.com sales@all-rite.com

831-636-9566



www.all-rite.com

ALL-RITE

*C*ustom *M*anufacturing



RV



Marine



Specialty



Limousine



Concession

Custom Manufactured Parts for the RV,
Limousine and Specialty Vehicles Markets



831-636-9566 (P)
831-636-9464 (F)
sales@all-rite.com

Limousines	3
Aluminum Siding.....	6
Fiberglass Siding.....	14
Roofing.....	15
Ceiling, Flooring and Wall Coverings.....	17
Rubber and Foam Seals.....	18
Custom Skylights.....	20
Roof Vents and Lids.....	22
Insulation.....	24
Bumpers and Bumper Covers.....	25
Adhesives and Tapes.....	16
Gas Tank Parts.....	27
Moldings, Screw Covers, &Trims.....	28
Rockguards.....	34
Custom Compartment & Basement Doors.....	36
Compartment Door Parts.....	41
Hatches.....	44
Tri/Mark Locks.....	47
Custom Entry Doors.....	48
Entry Door Parts.....	50
Screen Doors.....	51
Custom Windows.....	54
Window Parts.....	60
Ladders.....	63
Fenderskirts	66
Holding and Water Tanks.....	76



831-636-9566 (P)
831-636-9464 (F)
sales@all-rite.com

Terms & Conditions

The possession of this catalog must not be construed as an offer by us to sell to anyone other than those who furnish evidence that they are actively engaged in the Recreational Vehicle, Specialty or Limousine Industry.

WARRANTY

All-Rite offers no warranty, express or implied, regarding the suitability of any product for specific applications. Our liability is for product replacement only when defective. Warranty does not include labor or any additional expenses that may occur through use, proper or improper, or application before damage is discovered. Once a product has been installed, All-Rite bears no responsibility for the cost of replacement or repair. Products not manufactured by All-Rite are subject to these same conditions.

SALES TERMS

All orders must be prepaid unless prior arrangements are made with management. All drop shipped products will be prepaid for those customers on COD terms. Sales tax will be charged in California and Georgia for those customers who do not provide a sales tax exemption certificate.

PRICES

Please refer to the All-Rite website at www.all-rite.com for the most current prices. Prices are subject to change without notice.

LOCAL PHONE NUMBER

Please call our customer service center at (831) 636-9566 with any questions or concerns or to place an order. Order may also be placed on our website 24/7 at www.all-rite.com.

WILL CALL ORDERS

For insurance reasons, we no longer accept cash payments at our offices. Visa, Mastercard, American Express and E-checks are all accepted forms of payment. Orders must be picked up between 8:00 AM and 5:00 PM PST Monday through Friday. A time for pickup must be specified when the order is placed.

SHIPPING AN ORDER

Orders will be shipped from the All-Rite plant nearest you whenever possible. Occasionally items may ship separately from different warehouses to ensure the fastest shipping time and because not all warehouses are in stock on all items.

RETURN POLICY

Returns will be accepted on **stock items only** and **must have prior return authorization**. Returns will be subject to a 15% re-stocking fee plus applicable packaging and shipping charges. Returns must be authorized within 30 days or they will not be accepted. Non-stock and custom manufactured items are NON-RETURNABLE. "Cut" products, or anything sold by the foot are also NON-RETURNABLE.

CANCELLATION POLICY

Orders may only be cancelled on the same day the order was placed. A valid cancellation number must be received from a customer service representative. You may be unable to cancel an order for cut products or custom manufactured products if production has already begun on the item.

FREIGHT POLICY

All orders will be crated/packaged in accordance with the crating price schedule. Shipments made by a common carrier will be freight collect. The carrier used will be at our discretion, although we will try to accommodate special requests.

HOW TO RECEIVE A SHIPMENT

Inspect packaging for any obvious damage and make sure the piece count on the bill of lading matches the pieces received. If concealed damage is suspected on any shipment, those cartons or crates should be opened in the presence of the driver and All-Rite should be notified within 14 days. Shortages and/or damages should be noted in writing on the delivery receipt before signing for the shipment. Have the driver sign the freight bill acknowledging the shortage or damage.

FREIGHT CLAIMS

All-Rite products are carefully inspected and packaged to assure that they will reach you in good condition. Claims for any lost or damaged goods must be made directly with the carrier. Our responsibility ends when the goods have been accepted by a public carrier.

HOW TO FILE A CLAIM

Whenever possible, all damages or shortages should be noted on the delivery receipt. Any and all damaged freight, including packaging, should be retained until a physical inspection can be completed by the carrier, unless instructed to do otherwise by the carrier directly. Notify the carrier within 48 hours. If warranted, a written claim must also be filed. The carrier is required by law to respond to a claim within 30 days and must reach a final disposition of the claim within 120 days.

All-Rite reserves the right to modify/change these terms and conditions without notice

NEW! Limousine Division

All-Rite custom manufactures everything you need to build or customize your limousine. Most products are built in just 4 days or less! Custom products include but are not limited to:

- ◆ Stock windows kits in all popular sizes
 - ◆ Clear right or left
 - ◆ Tinted right or left
 - ◆ Ready to be installed directly from the box!
- ◆ Custom windows in ANY sizes
 - ◆ 3/16" Super Grey glass (finished size 7/16")
 - ◆ 1/8" G2 Grey glass (finished size 5/16")
 - ◆ Tempered (flat glass only) or laminated
 - ◆ Single piece curved glass up to **203"**
 - ◆ All windows are **DOT** certified
- ◆ Body panel kits in all popular makes/models for new applications or replacements:
 - ◆ Lincoln
 - ◆ Chrysler
 - ◆ Cadillac
 - ◆ Hummer
 - ◆ Ford
 - ◆ Mercedes
 - ◆ Body panel parts available in kits or sold individually
- ◆ Jet Coat steel in 11 or 18 gauge; custom gauges also available
- ◆ Extended and standard drivelines for any application such as:
 - ◆ Limousines
 - ◆ Recreational Vehicles
 - ◆ Off-Road Vehicles
 - ◆ Hot Rods
 - ◆ High Performance Race Cars
- ◆ Privacy Dividers
 - ◆ 32" single
 - ◆ 39" single or double
- ◆ Stainless steel head liners, trims and moldings
- ◆ Stock accessories such as lights and no smoking signs
- ◆ Differentials and axles coming soon!



NOTE: Currently all limousine parts are manufactured and shipped only from our California facility.



831-636-9566 (P)
831-636-9464 (F)
sales@all-rite.com

Limousine Metal Order Form

Order Date: _____ PO#: _____

Customer No.: _____ Invoice#: _____

Company Name: _____ Phone: _____

Ordered By: _____

Vehicle Type: _____

Quantity: _____

Due Date: _____

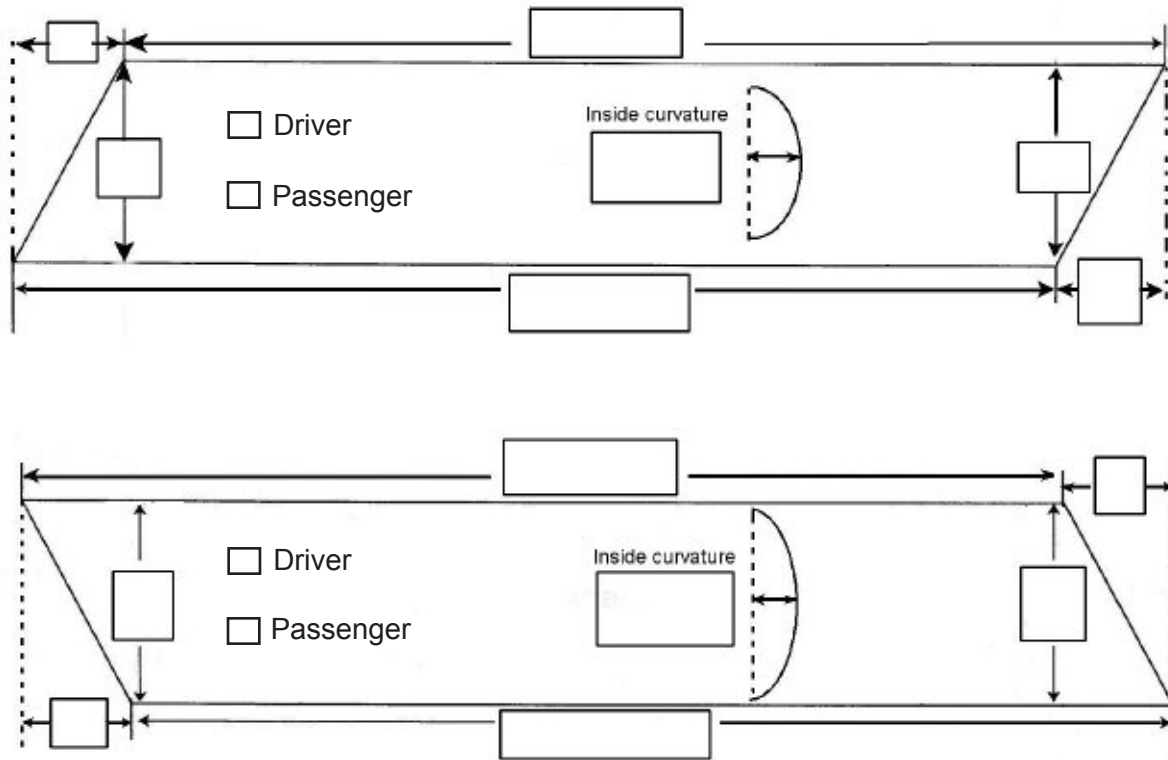
Notes/Special Instructions:

Drawings:

All Custom Product is Non-Stock and Non-Returnable



Limousine Glass Order Form



Glass: Laminated 3/16" Super Grey (7/16" finished size) 7% LT* Laminated 1/8" G2 (5/16" finished size) 15% LT* Flat Tempered 1/8" G2 31% LT*

Laminated 1/8" Clear (5/16" finished size) Laminated 1/8" Green (5/16" finished size) Flat Tempered 1/8" Clear Flat Tempered 1/8" Green

Angled Ends: No Yes

Radius Corners: No Yes

Vehicle Type: _____ **Qty:** _____

Order Date: _____ **PO#:** _____

Customer #: _____ **Ordered By:** _____

Company Name: _____ **Phone:** _____

NOTE: Tempered glass is NOT available as an option with curved windows!

*LT= Light Transmittance

All Custom Product is Non-Stock and Non-Returnable

Aluminum Siding

Ordering:

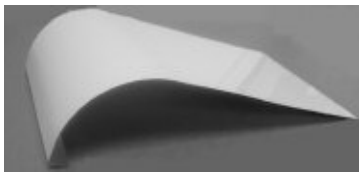
- Aluminum siding is custom made to order
- Unless otherwise noted, all metal is .024 gauge
- All orders ship the following business day after the order is received
- Pricing is per square foot and is rounded to the nearest foot for width and the nearest 6 inches for length
- Metal may be ordered in any width up to 4' and in ANY length
- Hand **brake** labor is available **up to 20'**
- Endo-matches available! See page 9 for tips on measuring

Shipping:

- Most metal is packaged in a custom wood crates, priced per foot
- Triangle cardboard packaging is available for orders up to 16' only.
- All orders are shipped freight collect & final freight costs are determined by the freight company
- Metal over 26' long requires special handling; shipping delays may occur as well as additional freight charges due to length



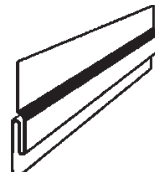
Custom Brake Work and Edges Available on ANY Piece of Metal



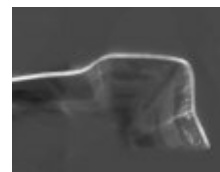
J-Wrap
2" - 4" radius



S-Lock Edge
Add 2 1/8"



Pittsburg Edge
Add 1 1/2"



Auto Mold Edge
Add 3/4"



Acme Edge
Add 1/2"
(for seamed roofs)



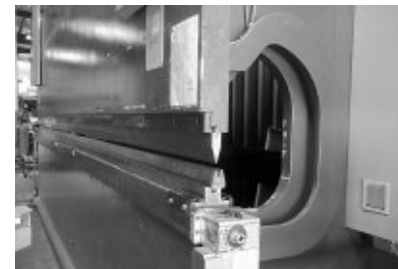
Custom Sheet Metal Work

Our new 20' brake allows us to precisely bend the following metals:

- Jet coat panels
- Stainless steel
- Chrome
- Aluminum



Quilted Stainless Steel



New 20' Durma Press Brake

Stainless steel applications include:

- Duct surrounds
- Counter tops & back splash
- Wall panels
- Commercial Kitchens
- Work tables
- Cabinets
- Shelves and sneeze guards
- And much more.....



Custom RV Corner Caps



Order Quote Only

Aluminum Siding Order Form

Qty	Cut Size Height X Length	Texture	Color	Pattern or Score	Edge	Endo Match

NOTE: All measurements must include shrinkage. See chart on page 8!

Textures and Colors

- Starbrite Aluminum
- Stucco Colonial
- Cedar Colonial
- Smooth Colonial
- Smooth Polar
- Cedar Polar
- Stucco Polar
- Cedar Designer Beige (GA)
- Stucco Designer Beige (GA)
- Smooth Nu-Tru White
- Smooth Black
- Smooth Fleetwood Grey (CA)
- Stucco Fleetwood Grey (GA)
- Smooth Navy/Cool Grey
- Smooth Skyline Grey (CA)
- Smooth Winnebago Beige/Des. Beige
- Smooth Winnebago Off White
- Smooth Dutchmen White
- Smooth Teal- 6 1/4" coil (GA)
- Smooth Dark Blue (CA)
- Cedar Brown (CA)
- Cedar Tan
- Cedar Red (CA)



Metal over 26' requires extra handling and may incur shipping delays as well as additional freight charges

Common Carrier Will Call UPS (Under 1 x 8 crate or no pattern)

Order Date: _____ P.O. _____

Customer #: _____ Ordered By: _____

Company Name: _____

Address: _____

City/State/Zip: _____

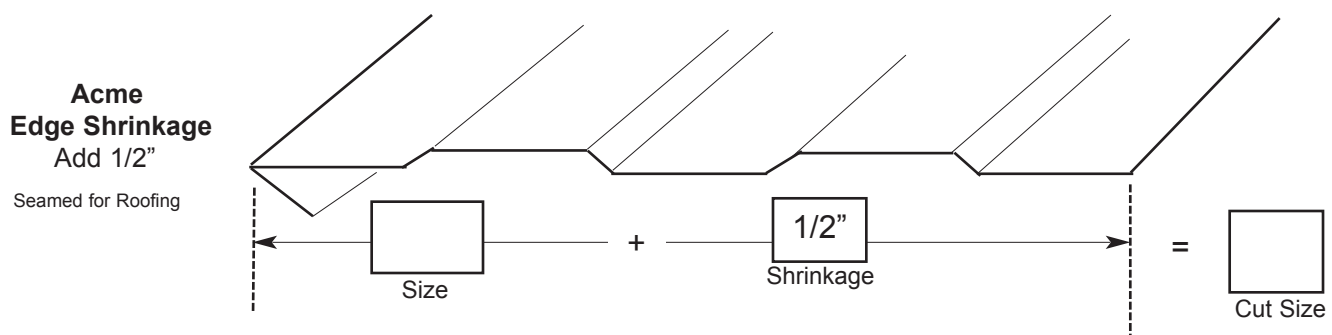
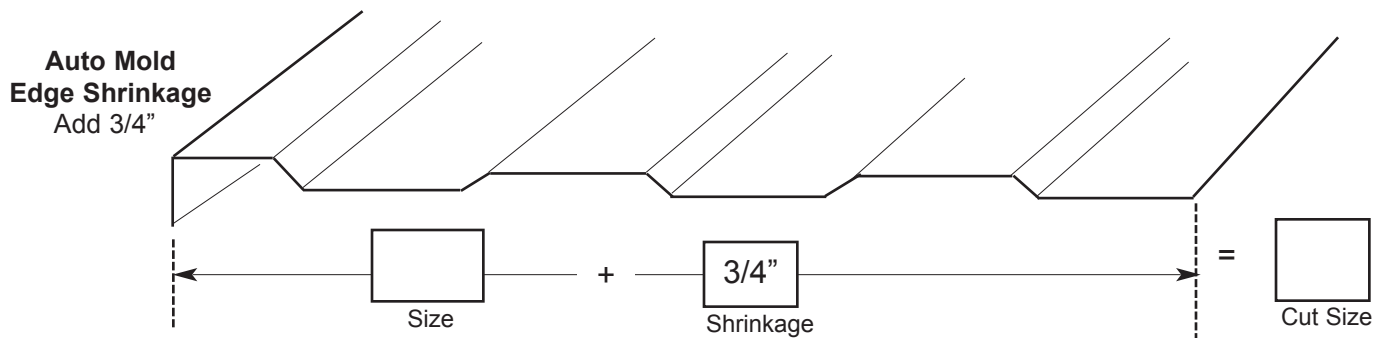
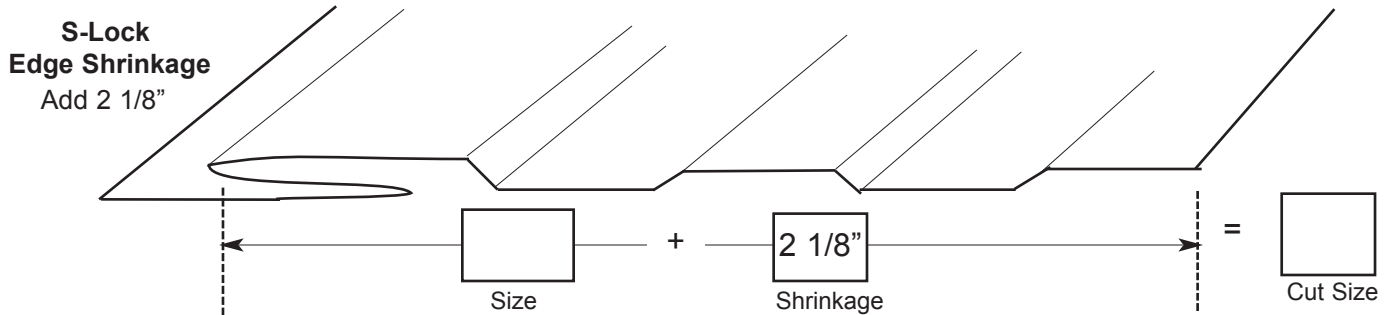
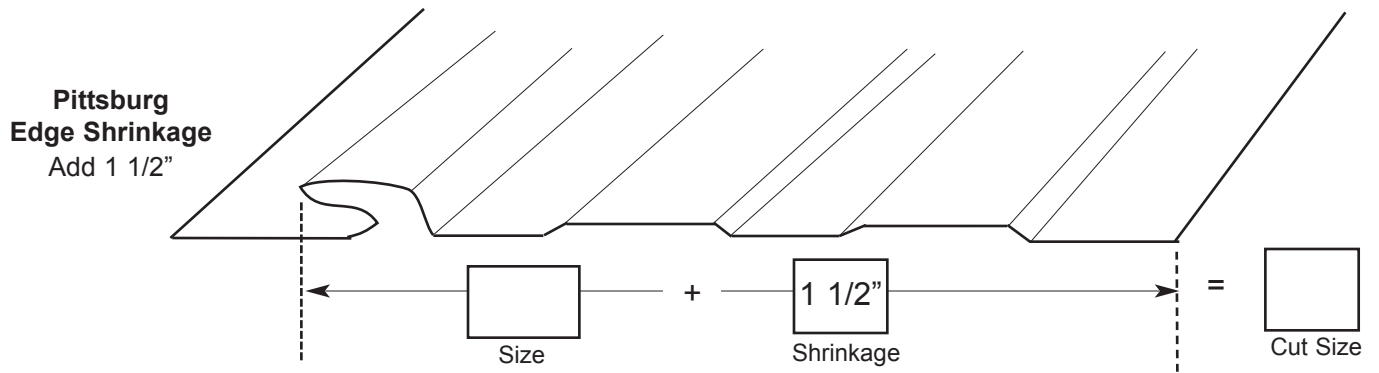
Phone: _____ Fax: _____

Email: _____



Determining Cut Size

When measuring metal with an edge, start from the roll of the edge and measure to the opposite side and add the **edge shrinkage** to determine the width. Your measurement should **ALWAYS** include enough metal to allow for edge shrinkage! Be sure to also allow for PATTERN shrinkage. Most common is an additional 1/4" per foot.



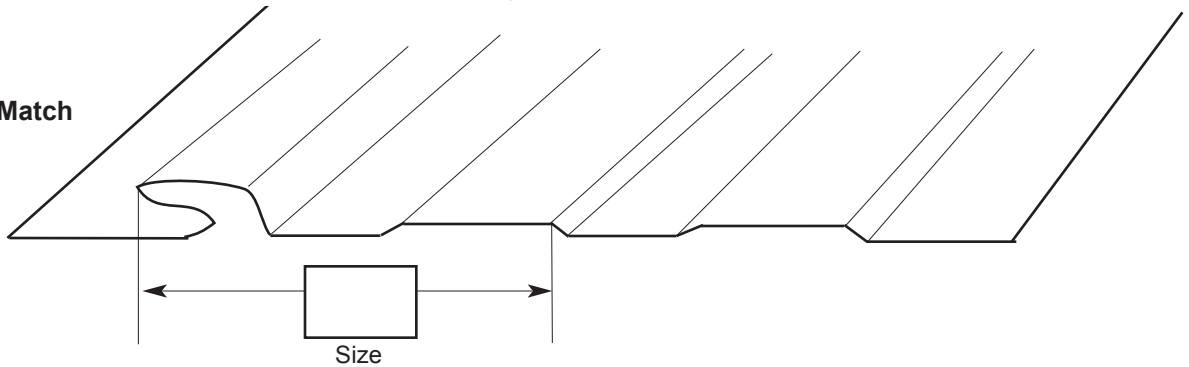


How to Measure an Endo-Match

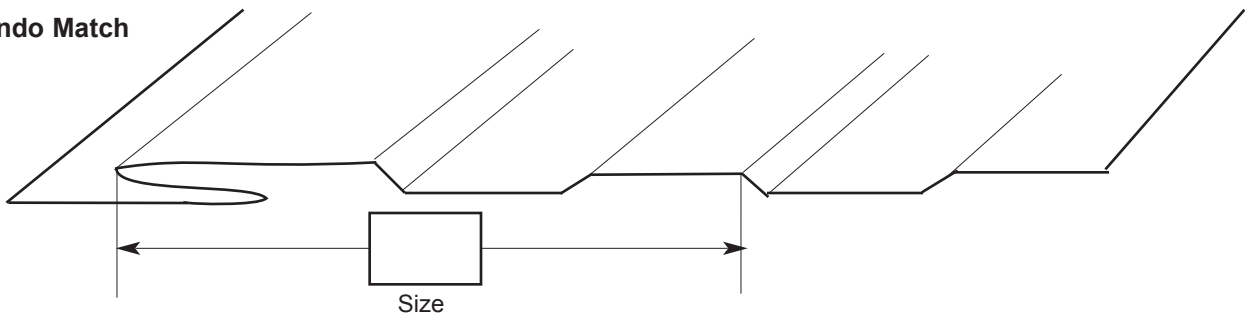
What is an Endo Match? An Endo Match is a machine setting that lets YOU determine where the pattern starts from the finished edge of the metal piece. Endo Matches are needed when you are splicing metal end-to-end. Simply let us know the dimensions indicated below and your metal will be on its way!

NOTE: Additional charges will be applied!

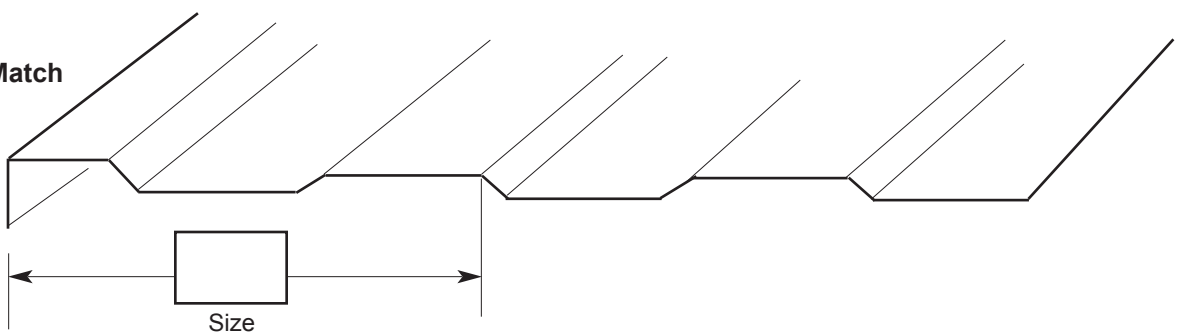
Pittsburg Endo Match



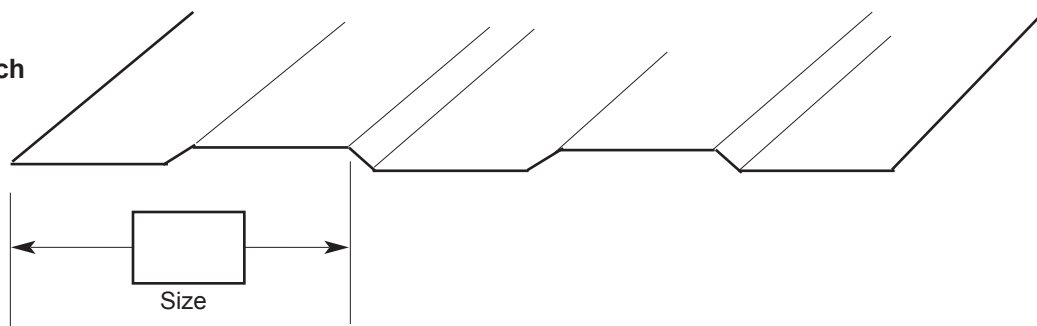
S-Lock Endo Match



Auto Mold Endo Match

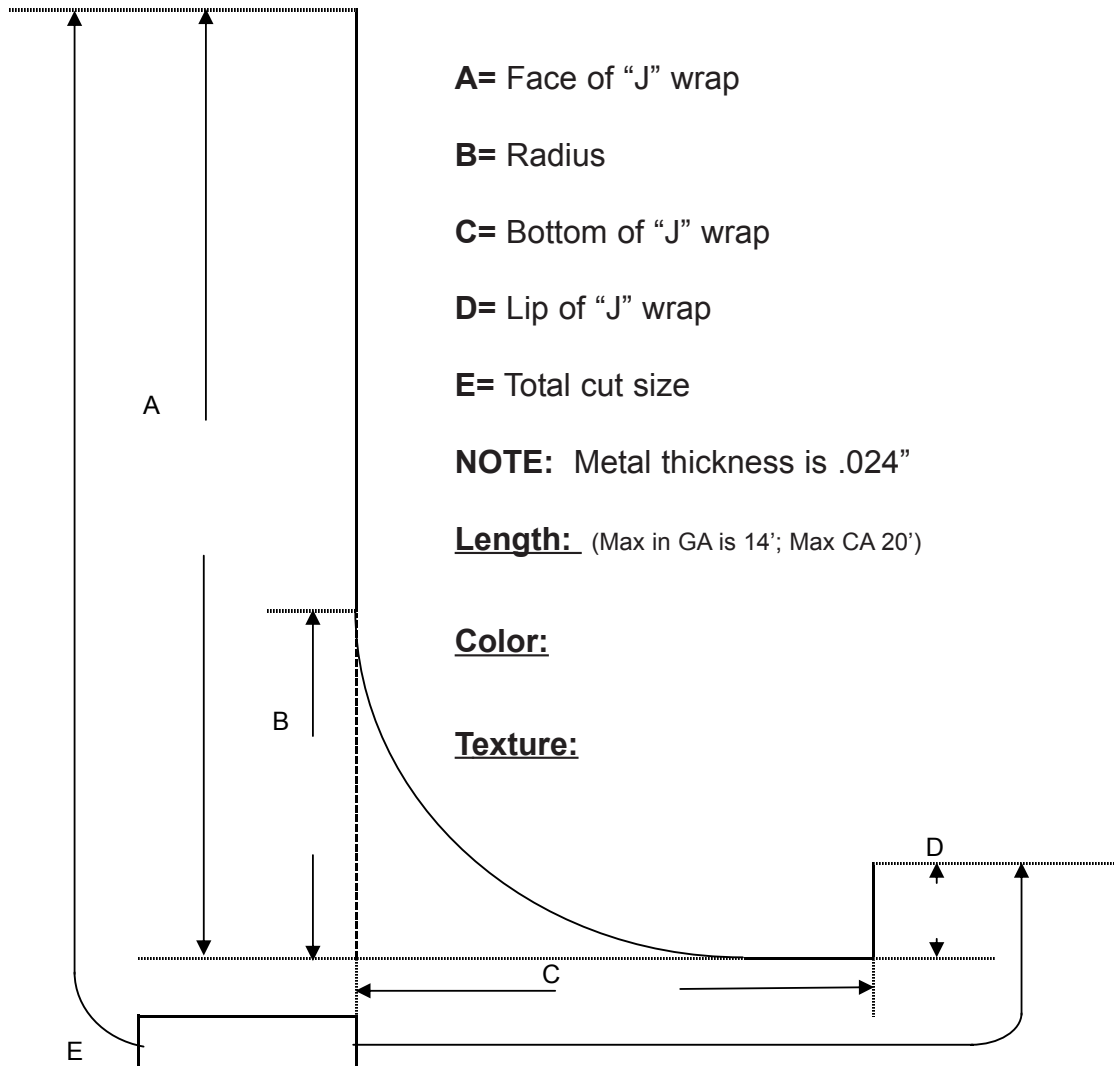


Raw Edge Endo Match





Custom "J" Wrap Order Form



- A= Face of "J" wrap
- B= Radius
- C= Bottom of "J" wrap
- D= Lip of "J" wrap
- E= Total cut size

NOTE: Metal thickness is .024"

Length: (Max in GA is 14'; Max CA 20')

Color:

Texture:

Total Cut Size ** should be less than A+C+D **

- Common Carrier
- Will Call
- UPS (Under 1 x 8 crate or no pattern)

Order Date: _____ P.O. _____

Customer #: _____ Ordered By: _____

Company Name: _____

Address: _____

City/State/Zip: _____

Phone: _____ Fax: _____

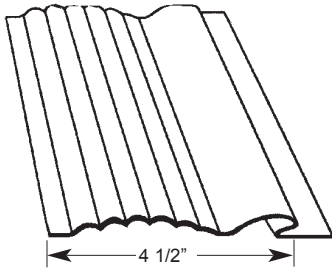
Email: _____



Available Metal Patterns

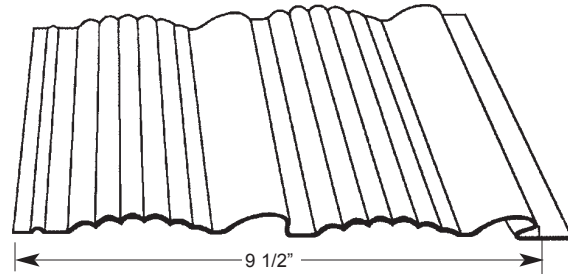
Minimum required length for patterns is 4'

120-A Mini Yoder

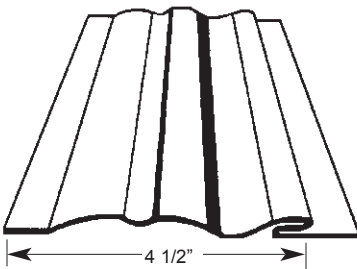


*** 120-A Yoder**

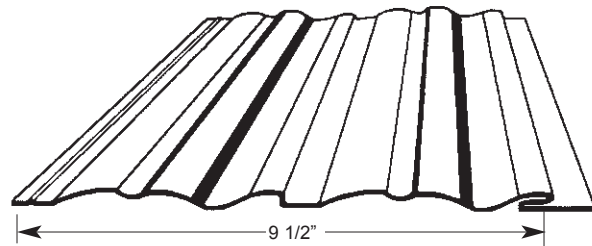
(This pattern is only available in CA)



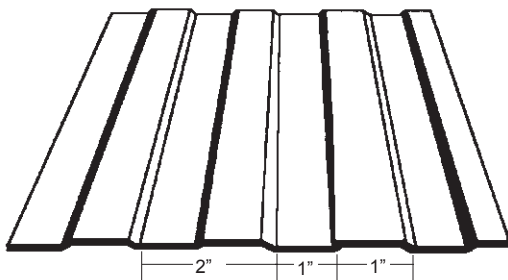
120-C Mini Yoder



120-C Yoder

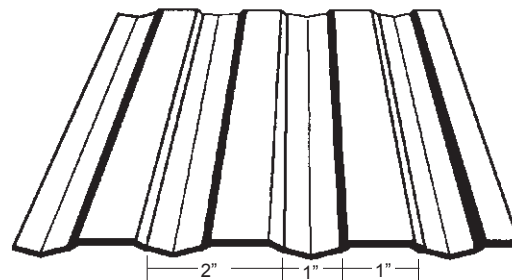


2" Mesa



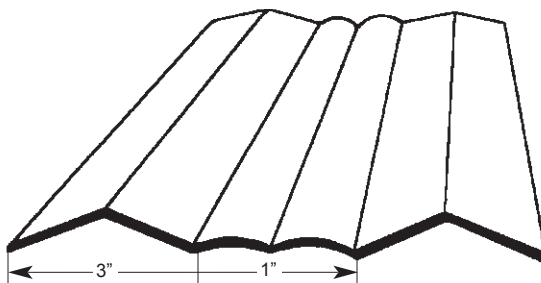
(Mesa & Valley are both 1" wide)

2" Mesa 1



(Mesa & Valley are both 1" wide)
Single line in the valley

4"3 With Reverse (No Mesa)



Roof Seam for Factory Seamed Roof

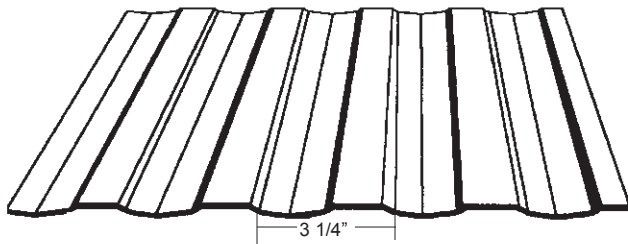


* All-Rite has manufactured our own roller die in order to exactly duplicate the original 120-A Yoder pattern



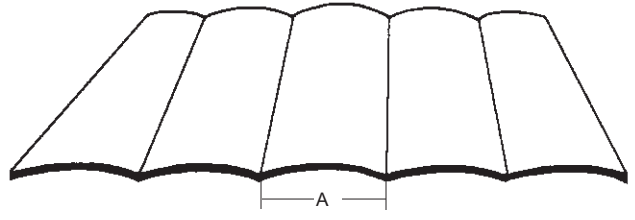
SEE PAGE 7 FOR A LISTING OF AVAILABLE COLORS AND OUR SIMPLE FAX ORDER FORM

* Fleetwood 3 Mesa 1



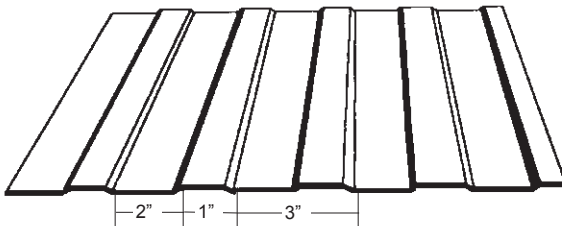
(Mesa & Valley are both 1 1/2")
Single line in the valley

2", 3" & 4" Runs



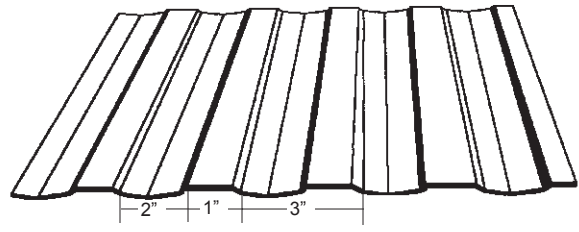
Measure "A" for size of run

3" Mesa



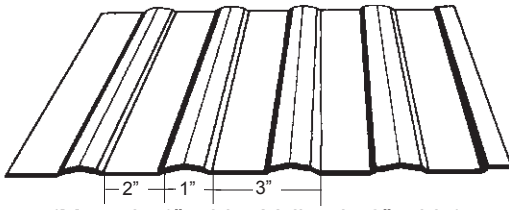
(Mesa is 1" wide; Valley is 2" wide)

3" Mesa 1



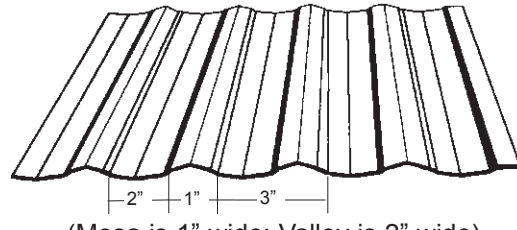
(Mesa is 1" wide; Valley is 2" wide)
Single line in the valley

3" Mesa with Reverse



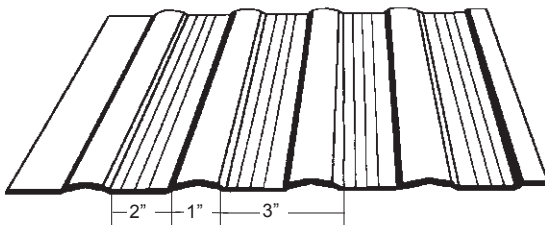
(Mesa is 1" wide; Valley is 2" wide)
Single line in the mesa

3" Mesa 1 with Reverse



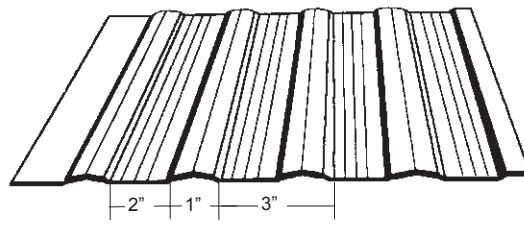
(Mesa is 1" wide; Valley is 2" wide)
1 line each in mesa & valley

3" Mesa 3



(Mesa is 1" wide; Valley is 2" wide)
3 lines in the valley

3" Mesa 3 with Reverse



(Mesa is 1" wide; Valley is 2" wide)
3 lines in the valley, 1 line in the mesa

* All-Rite has manufactured our own roller die in order to exactly duplicate this original Fleetwood pattern

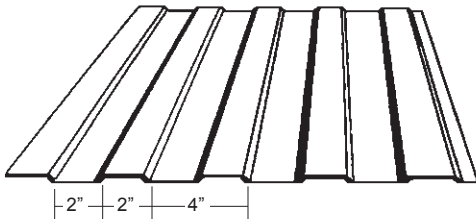


ALL ALUMINUM ORDERS SHIP IN 24 HOURS!

Custom brakes up to 20' now available!

* 4" Mesa or Winnebago 4" Mesa

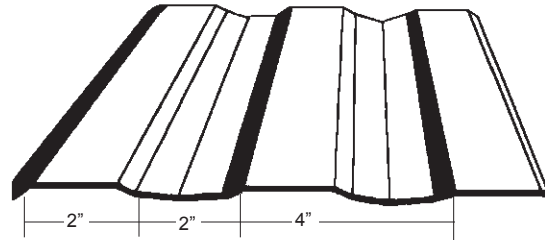
(This pattern is only available in CA)



(Mesa & Valley are both 2" wide)

Rise of Winnebago mesa is lower than standard 4" mesa

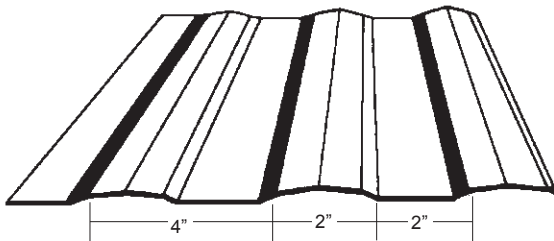
4" Mesa 1



(Mesa & Valley are both 2" wide)

Single line in the valley

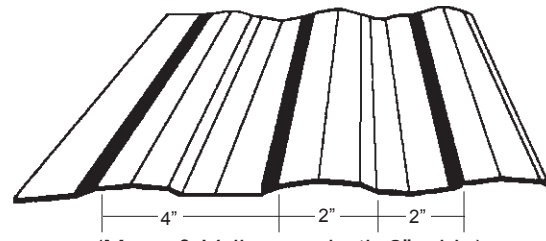
4" Mesa with Reverse



(Mesa & Valley are both 2" wide)

Single line in the mesa

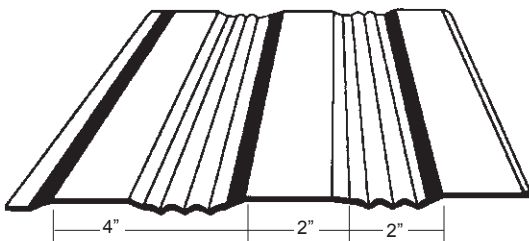
4" Mesa 1 with Reverse



(Mesa & Valley are both 2" wide)

1 line each in the mesa & valley

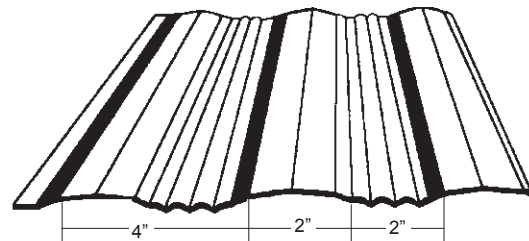
4" Mesa 3



(Mesa & Valley are both 2" wide)

3 lines in the valley

4" Mesa 3 with Reverse



(Mesa & Valley are both 2" wide)

3 lines in the valley & 1 in the mesa

Starbrite Aluminum

Light gauge polished aluminum with a tread plate pattern

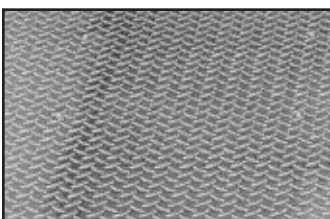
.025 thickness; 4' wide

Cut to any lengths

Lengths over 8' can be rolled and shipped on a pallet

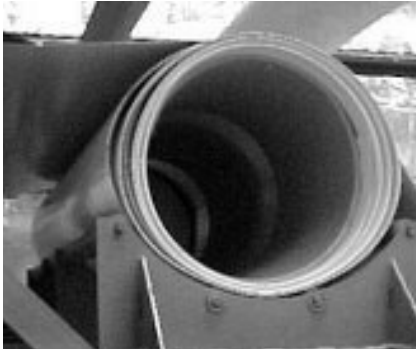
** Recommend ship flat to eliminate waves**

CUSTOM FABRICATION AVAILABLE!



* All-Rite has manufactured our own roller die in order to exactly duplicate this original Winnebago pattern

Fiberglass Siding and Roofing



Flat Fiberglass

(.045 Thickness/96" or 48" Width)

- ◆ Visible fibers
- ◆ A durable, semi-rigid material of fiberglass reinforced plastic
- ◆ Embossed finish panels won't corrode or dent like aluminum
- ◆ Standard width is 96" wide (8') or can be cut to 48" (4') wide
- ◆ Lengths up to 6 feet can be shipped via UPS, anything longer must ship via common carrier (All-Rite cannot quote freight)
- ◆ Available in Colonial or Polar White Smooth finish
- ◆ Polar White also available in Pebbled finish
- ◆ Packaged in a tube; up to 40' fit in one (1) tube.

NOTE: Pieces cut to 4' widths are HAND CUT and have only 1 factory edge.



High Gloss Fiberglass

(.065 Thickness/102" Width)

- ◆ High gloss, automotive finish; Fibers are less visible
- ◆ Excellent weathering properties
- ◆ No denting
- ◆ Easy to clean
- ◆ Used on most high-end coaches
- ◆ Stain resistance
- ◆ Structural integrity
- ◆ Exclusive gel-coated surface
- ◆ 102" widths . . . any lengths!
- ◆ Available in Polar White



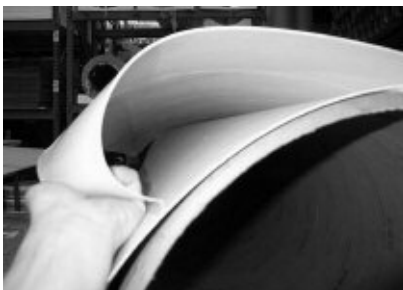
Luan Paneling

Ideal substrate for walls, aluminum or fiberglass siding and roofing as well as rubber roofing. Available in 4'x 8' sheets. Use with T-440 on page 26. Sizes may vary and panels may contain imperfections or have vinyl backing. Must ship common carrier.

Flex-Roof Fiberglass

(.040 Thickness/110" Width)

The Flexroof panel is designed to be a thinner, highly bendable, one piece roof panel. Its flexibility allows the panel to bend around the radius that is created where the sidewall and roof meet or any other small radius bend areas. This results in a seamless, no leak roof panel.



- ◆ Standard in 110" widths . . . available in ANY lengths!
- ◆ .040" thickness for easy bending
- ◆ The smooth, gelcoated surface designed for ease of repair
- ◆ Excellent weathering properties
- ◆ 4" minimum bend radius
- ◆ Will match and blend with smooth Filon sidewall products
- ◆ Can be used for roofing or on sidewalls

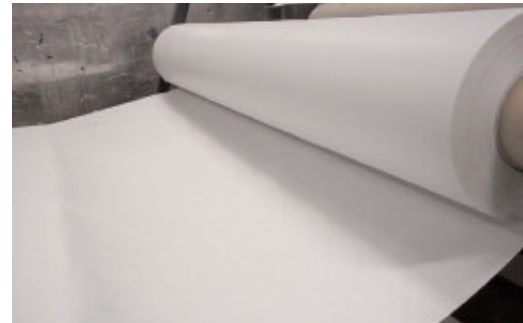
Roofing Materials



Super Flex Roofing Membrane

Benefits of Super Flex Roofing Material

- ◆ Does not chalk (will not turn side of unit grey)
- ◆ Is .165 lbs./sq ft compared to EPDM at .29 lbs./sq ft
- ◆ Has better puncture resistance than EPDM
- ◆ Has a non-skid surface for better traction
- ◆ Easily repairable
- ◆ Same color thru entire substrate
- ◆ Available in 8' 6" OR 9' 6" widths and any lengths!
- ◆ Polar white
- ◆ Can not be folded, MUST go freight due to creases



NOTE: Use Alpha Primer and Alphathane sealant (sold separately) on plastic roof fixtures. NOT included in kit!

Alphathane Sealant



Alpha Primer



Seamless Alpha-Ply Roofing

Alpha-Ply roofing membrane is a tough, lightweight and flexible material that incorporates the latest in EPDM and thermoplastic technology.

Benefits of Alpha Roofing Material

- ◆ Excellent UV protection
- ◆ Puncture and tear resistant
- ◆ Will not retain odors and is resistant to rot
- ◆ Easy to clean and is resistant to mold, algae and fungus
- ◆ Will not "chalk" like EPDM
- ◆ Standard in 9'6" widths
- ◆ .030 thickness
- ◆ Polar white
- ◆ Can not be folded due to creases

INSTALLATION KITS (sold separately): Includes 2 gallons of water based adhesive, 2 rolls of butyl tape and 3 tubes of lap sealant. Will cover approximately 38 feet.

Rubber Roof

Benefits of Rubber Roof

- ◆ Non-riveted, seamless one-piece roofing system
- ◆ Made of advanced elastomeric material
- ◆ Reduces noises and cuts energy costs
- ◆ Windproof, leak proof seals at edges and corners
- ◆ Bounces back from impact blows that dent, rip or tear other roofing
- ◆ Adheres smoothly to curves
- ◆ 8' 6" or 9' 6" widths; ANY lengths!
- ◆ .038 thickness
- ◆ Polar white

Shipping Methods: (for all roofing types listed above)

- ▶ Up to 25' of 8' 6" and 15' of 9'6" can be **FOLDED** and shipped in a no charge cardboard box via UPS
- ▶ Anything over must be reverse **ROLLED** on a tube and shrink wrapped then shipped via truck freight

NOTE: When folded to ship UPS, the roofs **WILL** have creases. No returns will be accepted due to creases.

Aluminum Roof

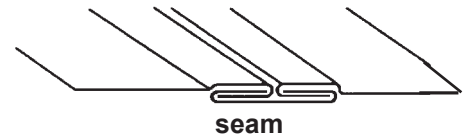
Continuous Rolled

- Seamless, continuous rolled roofs
- Heavier than normal roofs at .022 gauge thickness
- Available in Mill finish
- Extra wide at 102"



Factory Seamed

- Available in ANY lengths and in widths up to 13 foot 6 inches
- Purchase in the same wide variety of colors and textures as seen on page 7
- Can be made with or without a pattern or edges.



Roofing Accessories

All stock products also available for purchase at www.all-rite.com 7 days a week!



Acrylic Water-Based Adhesive

Specially formulated for rubber, Alpha Ply or Super Flex roofs. Use when laminating rubber to wood only!
Covers approx 200 sq ft at 7-10 mm thick. Available in 1 gallon.



Caulking/Lap Sealant

Seal doors, windows, moldings, etc. Excellent for rubber roofs. Self leveling Available in White or Tan. Single 10 oz. tubes or case of 30. **HazMat fee applies for case**



Butyl Rubber Tape

Used the same way as regular putty tape when installing rubber roofs. 1/8" x 3/4" x 60' rolls or case of 16



Mobilastic Roof Tape

Black roof sealant used for sealing continuous roof seams. 1/8" x 3/4" x 30' rolls or case of 20



Splicing Adhesive

Repairs small tears. Used to bond rubber to rubber. Available in quart cans, 6 quarts in a box. Shelf life: 1 Year **HazMat Fees apply**

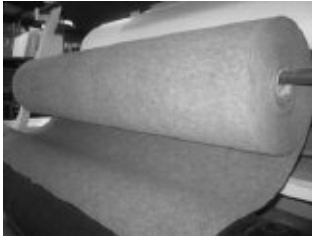


Plas-T-Cote Roof Coating

Non-asphalt roof coating for aluminum & galvanized roofs. Conforms to and protects against all weather conditions. Available in quarts, 1, 3 1/2 or 5 gallons. Colors: White or Aluminum



Ceiling Fabric



All-Rite's ceiling fabrics are easily applied with contact adhesives, have NO SEAMS and are currently used by most of the leading manufacturers.

All of our ceiling fabrics can also be used as compartment liners! (see page 42)
Sold by the running foot in 8' 6" widths in the following colors:

Ivory/Cream

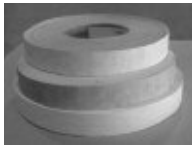
Opal Grey

Silver Haze (only available in 8')

Up to 25' of ceiling fabric can be folded and shipped in a box via UPS - OR-
Up to 40' can be rolled on a tube to ship common carrier in order to avoid creases in the fabric.

Ceiling & Wall Paneling

All-Rite stocks a large selection of **viny covered 4' x 8'** paneling, as well as matching batten strips and seam tapes, all in-stock and available for immediate shipment by **common carrier**. Special order colors and patterns also available. Minimum orders apply.



seam tape
1" x 150'



Battens are 1" x 8' and approx. 1/8" thick
Panels are 4' x 8' and 1/8"- 3/16" thick
and ship in a 4' x 8' crate. Up to 10 sheets per crate

NEW! See paneling trims
on page 28!

See current stock and color samples on-line at www.all-rite.com

Note: For raw luan paneling, see page 14

RV Underbelly

Woven underbelly provides maximum strength for bottom board applications. Acts as an excellent barrier between road hazards and the sub floor. Available in 105" widths and black only. Sold by the running foot.



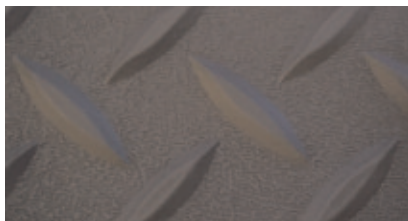
Underbelly Seam Tape

Used on seams and to repair tears.
4" wide x 60 yd rolls.



Tuff-Ply Flooring System

Tuff-Ply is the leader in pontoon boat and sport utility flooring! No other flooring material resists heat, cold, sunlight, UV radiation, ozone and chemicals better than seamless Tuff-Ply.

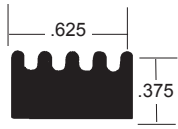


- ◆ 100% color-through. No surface color laminate to scratch, wear off or peel
- ◆ Ideal replacement for traditional carpeted plywood flooring
- ◆ Easy to clean using ordinary household cleaning solutions
- ◆ Will not oxidize
- ◆ Non-skid surface won't rot, eliminating odors
- ◆ Surface stays cool to protect skin
- ◆ Diamond plate pattern/grey color
- ◆ Use with 3080 Flooring Glue (sold separately)
- ◆ Glue covers approx. 375 sq feet at 20 mm thick (75' per gal)
- ◆ Glue sold in 5 gallon buckets or 1 gallon cans

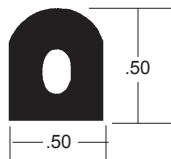


Rubber Seals and Gaskets

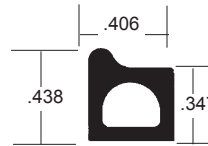
Die shapes are NOT to scale. All seals come with adhesive. All parts are available by the foot or by the roll size indicated. Once cut, product is non-returnable and non-refundable.



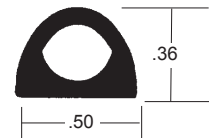
CS-103
RV window seal
250' rolls; Black only



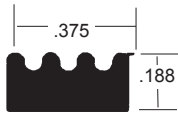
CS-104
RV & van window seal
250' rolls; Black only



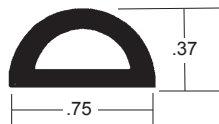
CS-106
RV slide out seal
250' rolls; Black only



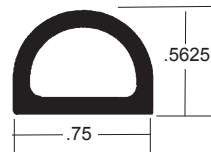
CS-108
RV window seal
250' rolls; Black only



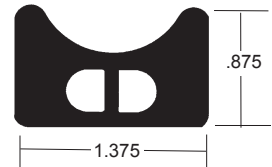
CS-113
RV entry door seal
250' rolls; Black only



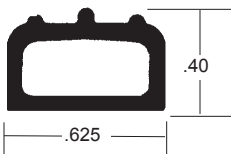
CS-119
RV entry door seal
250' rolls; Black only



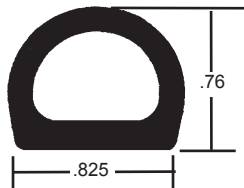
CS-135
RV entry door seal
300' rolls; Black only



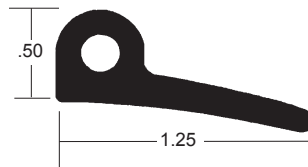
CS-352
RV slide out seal
125' rolls; Black only



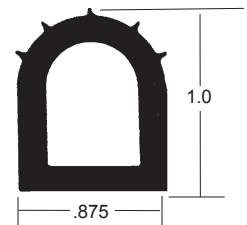
CS-1705
RV entry door seal
250' rolls; Black only



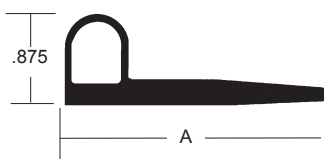
CS-1750
RV slide out seal
250' rolls; Black only



CS-2199
RV slide out seal
200' rolls; Black only



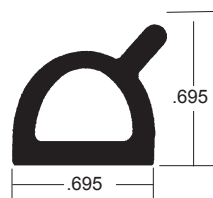
CS-2828
RV slide out seal
200' rolls; Black
250' rolls; White



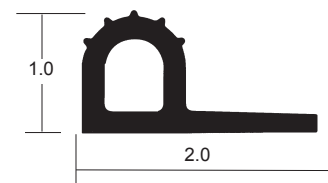
CS-2879/ CS-50663/ CS-2452
RV Slide out seal; Black only

Part #	A	Rolls
2879	3.375	100'
50663	4.0	200'
CS-2452	2.625	150'

(NOTE: CS-2452 available in white or black)



CS-5036
Cargo trailer door seal
250' rolls; Black only

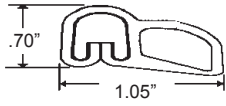


CS-50962W
RV slide out seal
300' rolls; White only

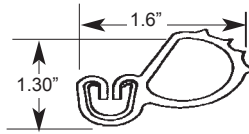
Also available for purchase on-line at www.all-rite.com 24 hours a day, 7 days a week!

Foam & Rubber Seals

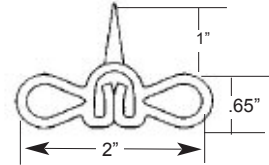
All seals available in both Black and White unless otherwise noted



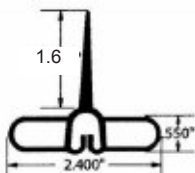
UG-216
Foam bulb seal
By the foot or in 500' rolls



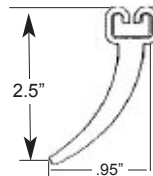
UG-600
Foam Bulb Seal
By the foot or in 250' rolls



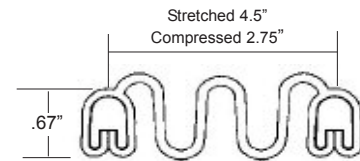
UG-50465
Slide Out Seal
By the foot or in 150' rolls



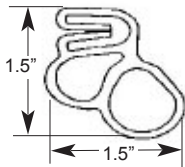
UG-50470
Slide Out Seal
By the foot or in 150' rolls



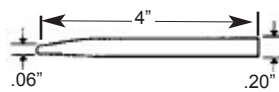
UG-5360
Foam Flap Seal
By the foot or in 200' rolls
Available in Black ONLY



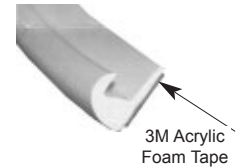
UG-5381
Double Channel Accordion Seal
By the foot or in 150' rolls
Available in Black ONLY



UG-725
Foam Bulb Seal
By the foot or in 250' rolls



UG-535
Sponge Rubber Profile
By the foot or in 150' rolls



TL-DRB
Drip Rail
Black or White
By the foot or in 250' rolls
Special "J" design to channel runoff
Used with Drip Rails on Page 29

TRIM-LOK

A high quality, flexible trim for many applications. All Trim-lok regular trims have aluminum interior clips and will not rust.

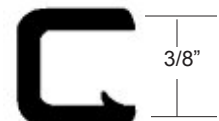
#100 Regular Trim
250' roll or by the foot
Black; Pebble texture



#150 Regular Trim
250' roll or by the foot
Black; Pebble texture



#1375 Regular Trim
250' roll or by the foot
Black; Pebble texture

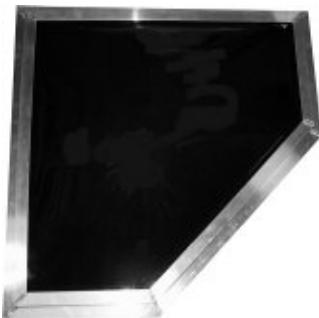




Custom All-Rite Skylights

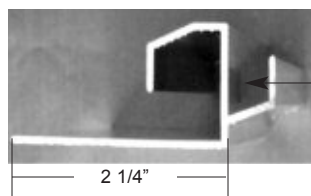
Any Size or Shape in 48 Hours!

All-Rite custom skylights are made from high-quality acrylic and can be built to your exact size and shape requirements and shipped in 48 hours. Unlike standard skylights, the All-Rite domes are mounted in aluminum frames and are installed like a regular vent. Since you are drilling through extrusion and not plastic, there will be no leaks, no breaks and a stronger hold. The extrusion is also equipped with a weep channel to route condensation away from the interior of your coach.



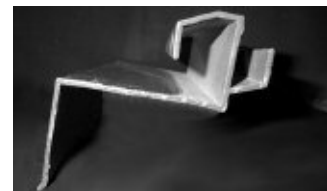
Sample of custom 5-sided skylight

RV FRAME

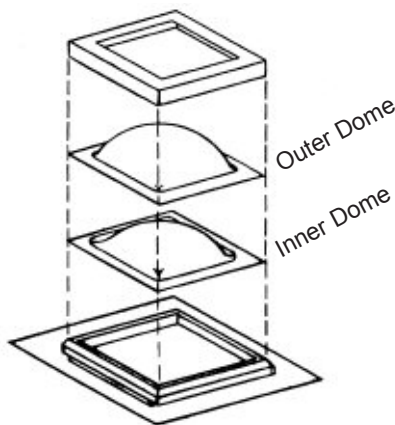


Sample of aluminum extrusion showing weep channel. 2 1/4" flange from edge of rough hole

RESIDENTIAL FRAME

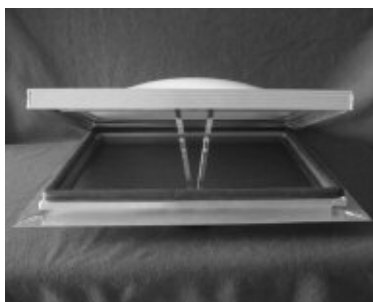


Sample of aluminum extrusion for curb mounting



Why Buy a Custom All-Rite Skylight?

- ◆ No size or shape restrictions
- ◆ 5 1/2" standard dome height
- ◆ Custom dome heights available
- ◆ Order by rough hole opening in roof (curb size for residential)
- ◆ Fastest lead time in the industry
- ◆ Choice of insulated or single dome
- ◆ Stronger, safer mounting through aluminum extrusion
- ◆ Weep channel to route condensation outside
- ◆ Opening skylights available with infinite opening positions
- ◆ Foam bulb seal reduces wind noise and leaks
- ◆ Acrylic available in clear, white or bronze
- ◆ Glass available in clear, light grey or dark grey



Sample of custom opening skylight

All custom product is non-stock and non-returnable



Custom Skylight Order Form

Order

Quote Only

1. Type of Skylight

- Standard RV
- Opening
- 5-Sided
- Residential

2. Rough Hole Opening

_____ X _____
(Length) (Width)

3. Bubble Height

- Standard (5 1/2")
- Custom _____

4. Single Dome

OR

Double Dome (Insulated)

5. Dome Color

Inner: White Bronze Clear
Outer: White Bronze Clear

Ship Via: UPS/Common Carrier Will Call

Order Date: _____ P.O.#: _____

Customer #: _____

Company Name: _____

Ordered By: _____

Address: _____

Phone: _____ Fax: _____

Email: _____

Custom skylights are non-stock and non-returnable

6. Shape

(If other than 4-sided, draw diagram with dimensions)

Stock Skylights

In stock and available for immediate shipment

Skylights



Has 2" Flange; 5" Clearance

- 14" x 14" White Single Dome
- 14" x 22" White Single or Double Dome
- 15" x 18" White Single or Double Dome
- 18" x 24" White Single Dome
- 21" x 27" White Single Dome
- 22" x 22" White Single Dome

NOTE: Approx. rough hole measurements

Angle Trim



White plastic
8" lengths
1 1/2" x 1 1/2"

Interior Trims



Inner Dome
1 - 1 1/2" flange; 4 1/2" clearance



Inner Garnish
Up to 5" depth
Cut to fit

- 14" x 22" inner dome or garnish
- 15" x 18" inner dome or garnish
- 18" x 24" inner dome
- 18" x 30" inner garnish
- 22" x 22" inner dome
- 28" x 28" inner dome (5 sided)

Both inner domes and interior garnish can be used with single or double skylights to finish the hole.

All-Rite can custom build any of the stock skylights listed above and more!
See pages 20 - 21 for information and order form.

Plastic Roof Vents & Lids



14" x 14" Power Vent
#212

White lid with metal frame and fan



14" x 14" Roof Vent

- #231 Amber lid with plastic frame
- #241 Smoke lid with plastic frame
- #216 White lid with metal frame
- #256 Aluminum lid with metal frame



Exit Vent w/ Metal Frame

- #586 15" x 22"
- #686 26" x 26"

Sizes on EXIT VENTS are "pass through" not outer dimensions



14" x 14" Roof Vent Lids

- #901 White
- #903 Amber
- #905 Aluminum



Exit Vent Lids

- #1320 13" x 20" White lid
- #2626 26" x 26" White lid



Plastic Plumbing Vent

For vent pipes up to 2" diameter
with a 2 1/2" projection.
Colonial or Polar

Now you can follow us on Facebook!



Fiberglass Replacement Lids



#AR-15
15" x 25 1/2"
Airstream/Revcon Vent Lid



#H-14
14" x 14" Hehr
No Draft Vent Lid



Jensen Vent Lid
#J-22 22" x 22"
#J-26 26" x 26"



#WV-14
14" x 14"
Winnebago Vent Lid



#HA-15
15" x 15"
Hammond/Airstream Vent Lid



#B-14
14" x 14"
Winnebago Lid w/ Fan Dent



Elixir Vent Lid
#E-15 15" x 22"
#E-17 17" x 17"
#E-18 18" x 25"



#RV-1
15" x 16 5/8"
Winnebago Refer Vent Cap

Have you registered on-line yet? It's Easy!

Don't let the opportunity pass by to have access to the most current pricing after hours and on weekends. We want you to have the ability to quote your customers with confidence!

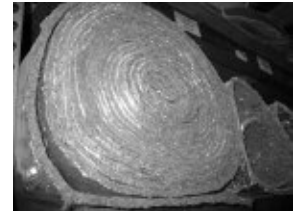
- ☞ On-line ordering
- ☞ On-line quoting
- ☞ General questions and comments
- ☞ Current pricing
- ☞ New and featured products
- ☞ Clearance items only found on-line!

Insulation

Insulating Foil

Insulating foil is FAA approved and works as both a radiant and thermal heat barrier, an acoustic barrier, as well as a moisture and vapor barrier. It is sold by the running foot and is available in 4' widths. Available in 3/8" single or 5/8" 2-ply. Use it on:

- ✓ Engine covers
- ✓ Ceilings
- ✓ Generator compartments
- ✓ Floorboards
- ✓ Walls
- ✓ Hot water heater blankets



Insulating Foam Board

Insulating foam board is primarily used BETWEEN framing in walls, floorboards and ceilings. It is made of an expanded polystyrene foam and is ideal for repairs Available in 1.5 lb density in the following sizes:

- 1 1/2" x 4' x 8'
- 1 1/4" x 4' x 7'
- 3/4" x 4' x 7'
- 3/8" x 4' x 4'

Note: Foam Board ships in a 4' x 8' crate, freight collect



Insul-Tape

Pressure sensitive aluminized foil tape. Available in 2" x 30' rolls. Per roll or case of 16



Sticky Stuff Spray Adhesive

Works great with Insul-Tape and other metal surfaces. One can will cover two 4' x 6' panels. Per can or case of 12 (GA only)

Hint: Use Sticky-Stuff spray adhesive and Insul-Tape with Insulating foil



Fasteners

Hex Head Tek



- #8 x 3/4" 35 Box or 1000 Box
- #8 x 1" 30 Box or 1000 Box
- 1/4" x 1" 10 Box or 1000 Box

Hex Washer Head



- #8 x 3/4" 250 Box or 1000 Box
- #8 x 1" 225 Box or 1000 Box
- #8 x 1 1/2" 175 Box or 1000 Box
- #8 x 2" 150 Box or 1000 Box
- #8 x 2 1/2" 125 Box or 1000 Box

Pan Head Squil



- #8 x 3/4" 250 Box or 1000 Box
- #8 x 1" 225 Box or 1000 Box
- #8 x 1 1/2" 175 Box or 1000 Box

Flat Head Squil



- #8 x 1" 225 Box or 1000 Box
- #8 x 1 1/2" 175 Box or 1000 Box
- #8 x 2" 150 Box or 1000 Box
- #8 x 2 1/2" 125 Box or 1000 Box

1/4" Lag



- 1/4" x 1 1/2" 8 Box or 1000 Box
- 1/4" x 2" 6 Box or 1000 Box
- 1/4" x 3" 4 Box or 1000 Box

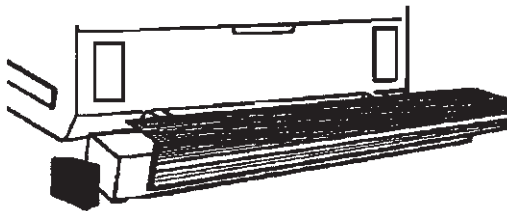
Aluminum Rivets



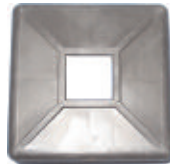
All aluminum mill finish shank & head
CAN'T RUST!
1/8" diam; 3/16" or 9/16" grip
3/16" diam; 1/4" grip

Sewer Hose Bumper & Cover

4"x 4"x 92" Bumper Cover
Extruded aluminum with insert slot
Accepts matching insert



4" Rubber End Cap

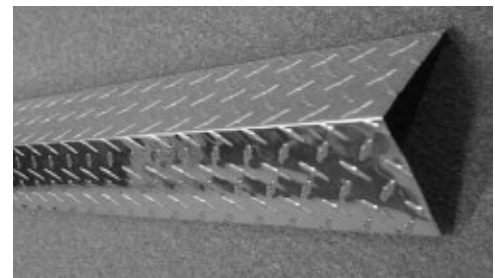
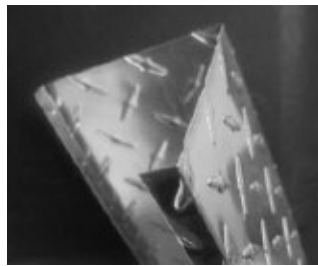


4" x 4" x 96" Bumper with rubber ends
Unfinished Steel; Can be cut to size
Made to fit sewer hose; Brackets not included
1/8" thick; 8 gauge; 49 lbs.



Custom All-Rite Starbrite Bumper Covers

- Fits 4 x 4 x 92" bumpers
- Can be custom made to other sizes/shapes
- Available for "C" channel bumpers
- Won't rust!
- .025 thick
- Polished aluminum with tread plate pattern



Citrus Clean Concentrate

Citrus Clean Concentrate is made with a citrus base d'limonene, the major component of the oil extracted from citrus rind. The natural orange extracts produce a citrus scent and a natural solvency and grease releasing agent.

Citrus Clean is Biodegradable, Non-flammable and Environmentally Safe!

Uses:



Pet stains
Walls
Woodwork
Carpets
Upholstery
Leather
Chrome
Fiberglass
Stainless Steel
Machinery
Computers
Floors

Coil Cleaner
Cement
Glass
Jewelry
Motors
Door Panels
Convertible Tops
Tinted Glass
Rust
Road Tar
Oxidation

Adhesives & Tapes

Sta-Put & Sta-Put II



Original Sta-Put spray on adhesive for general use. Sta-Put II for laminating styrofoam. Dries quickly. I avail in 16 oz cans II avail in 13 oz. cans. or case of 12

Stabond T-440



Not available for sale in the following counties in California:

Riverside
Los Angeles
Orange County
San Bernadino

High coverage, sprayable contact adhesive for bonding wood, metal or fiberglass panels. Shelf Life: 6 months
EXTREMELY FLAMMABLE!
Available in 1 or 5 gallon cans.
HAZMAT FEES APPLY!

Note: Each gallon covers approx. 500 sq ft.

Stabond E-183



General purpose adhesive particularly suited for bonding foam to itself or other surfaces. Shelf Life: 6 months
EXTREMELY FLAMMABLE!
Available in 1 or 5 gallon cans.
HAZMAT FEES APPLY!

Acrylic Water-Based Adhesive



Specially formulated for rubber, Alpha Ply or Super Flex roofs. Use when laminating rubber to wood only!
Covers approx 200 sq ft at 7-10 mm thick. Available in 1 gallon.

Splicing Adhesive



Repairs small tears. Used to bond rubber to rubber. Available in quart cans, 6 quarts in a box.
Shelf life: 1 Year
HazMat Fees apply

Grey Parr Tape



1/8" x 2" x 50' rolls or case of 4
3/16" x 1" x 35' rolls or case of 8
3/16" x 2" x 35' rolls or case of 4

Butyl Rubber Tape



Used the same way as regular putty tape when installing rubber roofs. 1/8" x 3/4" x 60' rolls or case of 16

PuttyTape



A heavy grey mastic, flexible putty tape. For use under moldings, around windows, doors and vents.
1/8" x 1" x 30' roll or case of 16
3/16" x 1" x 20' roll or case of 16

Mobilastic Roof Tape



Black roof sealant used for sealing continuous roof seams.
1/8" x 3/4" x 30' rolls or case of 20

Gas Tank Parts

Universal Electric Fuel Pump

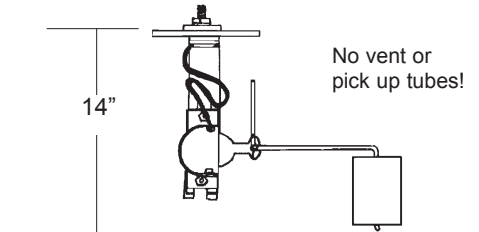


Pump Specifications

- Use with leaded, unleaded, gasohol or diesel fuel
- Rated between 4 - 5 psi
- 72 gallon per hour capacity
- Positive displacement
- Motor driven vane type
- Constant fuel flow
- Non pulsating
- Internal pressure regulating valve

Universal Sending Unit

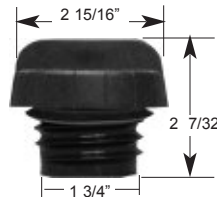
Chevy - 90 ohms
Dodge/Ford - 78 ohms
'87 to '90 Ford - 160 ohms



3 Port Valve For dual tanks



Threaded Gas Cap Pressure vacuum for emission control Does NOT fit steel filler neck



2 Way Switch 5 or 6 Terminal

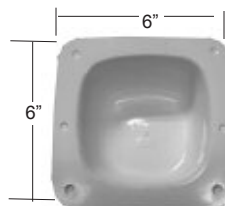


6 Port Valve Motor driven

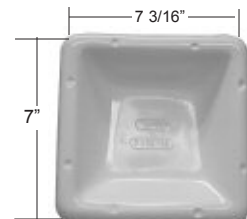
For dual tanks with return lines
Includes switch & harness



#510 Champion Fiberglass Filler Neck Surround 6 screw dents Smooth finish



#25 Tioga Fiberglass Filler Neck Surround 8 screw dents Smooth finish



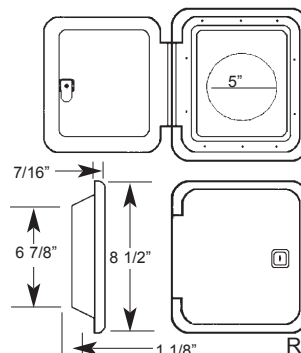
Steel Filler Neck Without Flange

6" straight filler neck
Leaded or unleaded
Used with double tang gas cap



Oval Gas Hatch w/ Flat Back G515P (polar only)

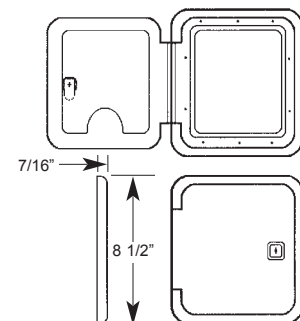
Cut out Dimensions
6 7/8" h x 6 3/8" w



Gas Hatch

G505P (polar only)

Cut out Dimensions
6 7/8" h x 6 3/8" w

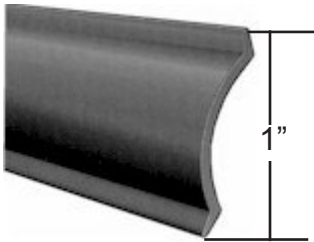


Refer to pages 44- 46 for additional exterior hatches

NOTE: There are NO RETURNS on any electrical parts

Screw Covers

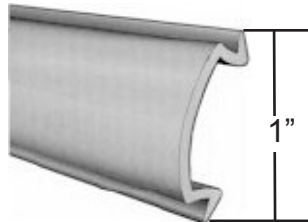
Economy Insert



May be purchased in 500' rolls,
by the foot or in 10 packs

- Colonial
- Polar White
- Black
- Brown

Quality Insert



May be purchased in 350' rolls,
by the foot or in 10packs

- Colonial
- Polar White
- Black
- Brown

Flexible Insert



May be purchased in 750' rolls,
by the foot or in 10 packs

- Colonial
- Polar White
- Black
- Brown

FYI: Sungard plastic inserts contain sun inhibitors that resist the effects of extreme weather conditions. This pliable material withstands the shrinkage that usually accompanies age and maintains its color years longer than traditional inserts.

Rigid Plastic Screw Covers

Elixir Screw Cover
8' Lengths



- Colonial
- Polar White
- Black
- Brown

Phillips Screw Cover
8' Lengths



- Colonial
- Polar White
- Black
- Brown

Hehr Screw Cover
8' Lengths



- Colonial
- Polar White
- Black
- Brown



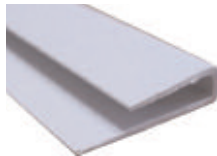
Rigid Plastic Trims

Used to install paneling with a clean seam

Rigid Divider
8' Lengths
White plastic



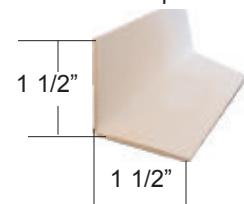
Rigid End Cap
8' Lengths
White plastic



Ceiling Trim
8' Lengths
White plastic

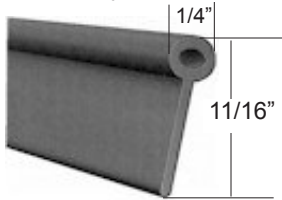


Angle Trim
8' Lengths
White plastic



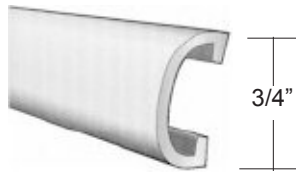
Miscellaneous Plastic Trims

1/4" Trailer Welt/Gimp
750' roll or by the foot



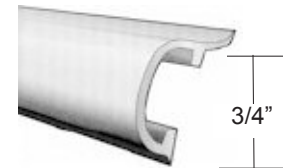
- Polar White
- Tan

#100 Vinyl Cap
250' roll or by the foot



- Colonial
- Polar White

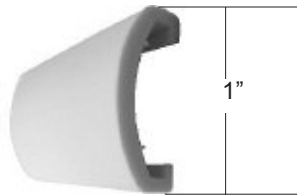
#125 Vinyl Cap
250' roll or by the foot



- Colonial
- Polar White

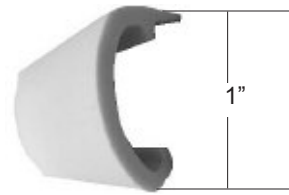
Use with M53 Base Trims on pg. 31

#200 Vinyl Cap
250' roll or by the foot



- 1" Wide Plastic Vinyl Cap
- 3/8" depth
- Polar White only

#225 Vinyl Cap
250' roll or by the foot



- 1" Wide Plastic Vinyl Cap
- Longest leg measures 1/2"
- Polar White only

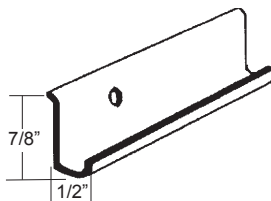
Use with M51 & M52 Base Trims on page. 31

Drip Rails

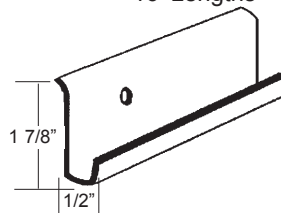
Buy 10 moldings of the same kind and color and SAVE!
Moldings can be cut for UPS shipping, but once cut are NON-RETURNABLE!

Don't Forget
gutter spouts!
page 31

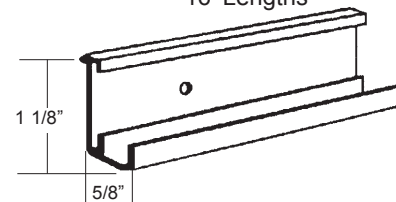
M10 Regular Drip
Mill, Colonial, Polar White
16' Lengths



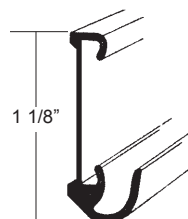
M13 Wide Drip
Mill Finish
16' Lengths



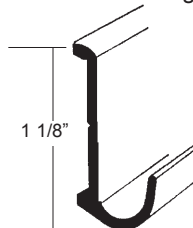
M16 Insert Drip
Mill, Colonial, Polar White
16' Lengths



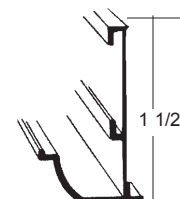
M19 Drip Rail with Insert
Polar White
16' Lengths



M14 Drip Rail
Polar White
16' Lengths



M15 Insert Gutter with Leg
Polar White
16' Lengths

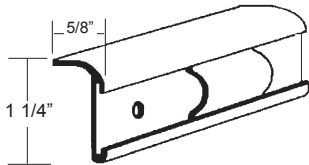


See page 28 for inserts and page 19 for flexible adhesive drip rail!

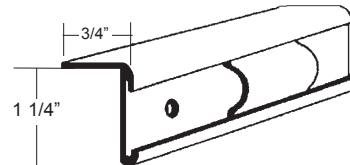
Insert Moldings

Unless otherwise noted, all inserts can be used with 1" plastics on page 28. All inserts come with **pre-drilled** holes.

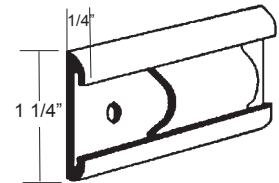
M20 Corner Insert
16' Mill, Designer Beige
Polar avail in 9', 10' & 16'



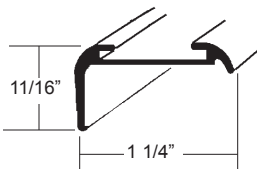
M24 Wide Lip Insert
Mill, Polar White
16' lengths



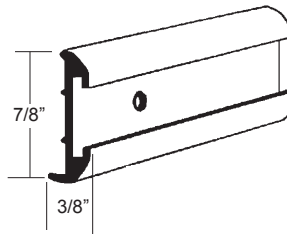
M27 Flush Insert
Mill, Polar White
16' lengths



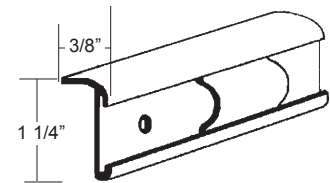
M31 Insert Roof Edge
Polar White
16' lengths



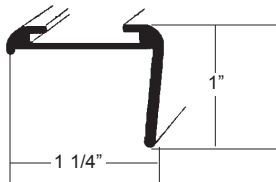
M32 Narrow Insert Polar White
16' lengths
*Used with Flexible insert *



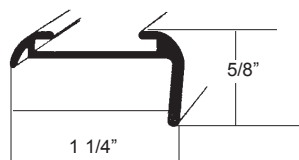
M33 Flush Insert w/ Lip
Mill, Colonial, Polar White,
16' lengths



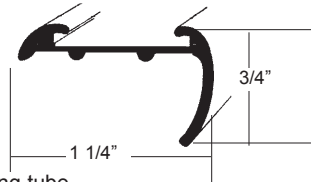
M34 Insert Roof Edge with 3/4 Leg
Polar White
8', 10', 14' (CA) 9', 14' (GA)



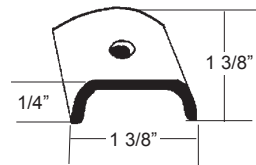
M35 Insert Roof Edge
Polar White
16' lengths



M39 Insert Roof Edge w/ Curved Leg
Polar White
16' lengths



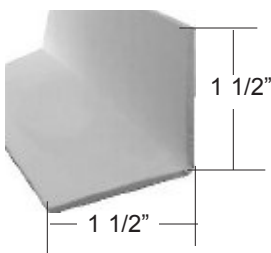
End Cap
Mill or Polar
Each or in a 10 pack



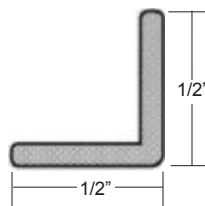
Due to size, only 5 M34, M35 or M39 will fit per shipping tube

Angle Moldings (no holes punched)

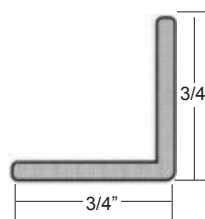
Angle Trim
White plastic
8' Lengths



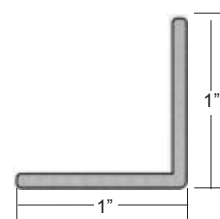
M90 1/2" Angle
Mill Finish
12' lengths
.050 thick



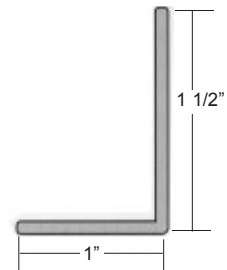
M91 3/4" Angle
Mill Finish
12' lengths
.050 thick



M92 1" Angle
Mill Finish
12' lengths
.050 thick



M93 1 1/2" x 1" Unequal Angle
14' Mill; 16' Polar
.090 thick



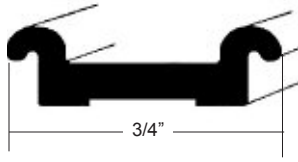
NOTE: Once cut, moldings are non-returnable.

Full length moldings must ship via common carrier and All-Rite cannot quote freight on these shipments.

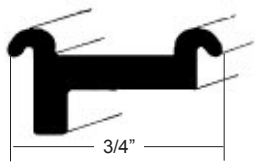


Base Trims and Cap Moldings

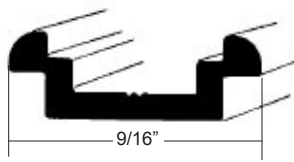
M51 Vinyl Cap Base
Mill Finish; 12' Lengths
(Use with #200 & 225 vinyl caps on pg. 29)



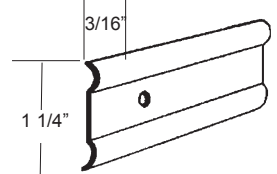
M52 3/4" Vinyl Cap Base with Leg
Mill Finish; 12' Lengths
(Use with #200 & 225 vinyl caps on pg. 29)



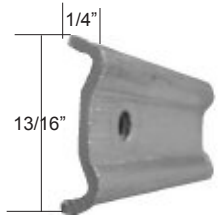
M53 5/8" Vinyl Cap Base
Mill Finish; 12' Lengths
(Used with #100 & #125 vinyl caps on pg 29)



M54 Wide Base Trim
Mill Finish
16' Lengths
No Insert



M55 Base Trim
Mill Finish
16' Lengths



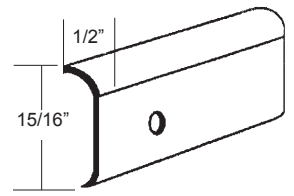
M56 Flat Insert Trim
Polar Finish; 16' Lengths
1.25" W x .313"H
Use with Elixir Screwcover



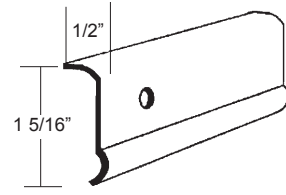
M57 Base Trim
Polar Finish; 16' Lengths
2" W x .328"H
Use with Elixir Screwcover



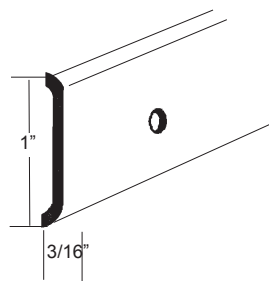
M60 Regular Edge
Mill & Polar Finish
16' Lengths



M61 Wide Corner
Mill Finish
16' Lengths
(GA only)



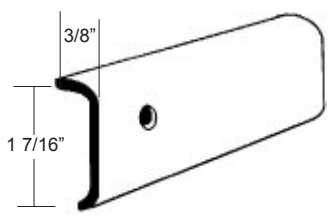
M64 1" Outer Trim
Polar Finish
16' Lengths



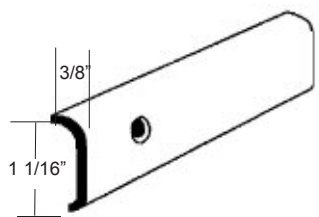
M65 Corner Cap
Polar White
16' Lengths
1 7/16" wide with a 3/4" leg



M67 Fleetwood Large Cap
Polar
16' Lengths



M68 Fleetwood Small Cap
Polar
16' Lengths



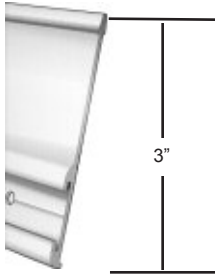
Rain Gutter Spouts
Fits all popular drip rails
Polar White or Colonial White
Sold in sets; Set includes left & right corners



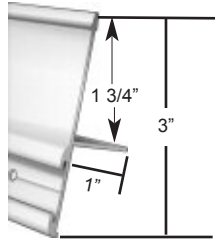
NOTE: Moldings can be cut to 8 foot lengths for UPS shipment. Once cut, moldings are non-returnable. Full length moldings must ship via common carrier and All-Rite cannot quote freight on these shipments.

Radius Trims and Awning Rails

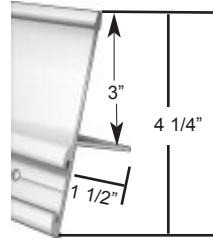
M37 Slide Out Trim w/ Insert
Polar; 16' Lengths
(GA only)



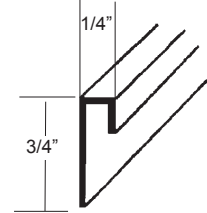
M38 Slide Out Trim w/ Insert & Leg
Polar; 15' Lengths
Due to size, must ship in crate



M48 Slide Out Trim w/ Insert & Leg
Polar; 14' Lengths
Due to size, must ship in crate

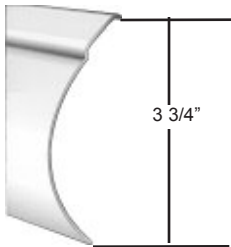


M94 5/32" Cap
Mill, Colonial (CA)
10' lengths



M37, M38 & M48 accept 1" screw covers on pg 28

M99 Radius Top Rail
Polar & Colonial; 21' Lengths
Due to size, must ship in crate



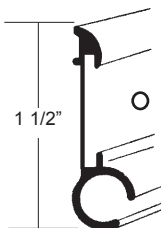
Bottom Radius Trim
Polar White; 16' Lengths
2 1/8" Radius, 1 1/2" Wide
Due to size, must ship in crate



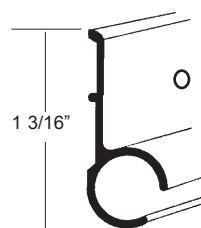
Custom Slide-Out Corner Trim
Polar White
Minimum order qty of 10
Custom made to your exact size specs



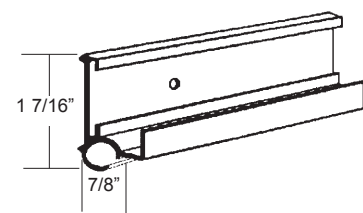
M70 Insert Awning Rail
Polar White
16' Lengths



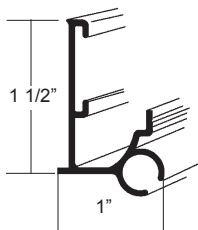
M71 Awning Rail No insert
Polar White; 16' Lengths
(GA only)



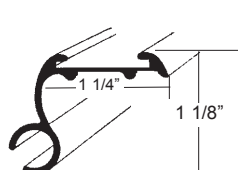
M72 Insert Awning Drip
Mill, Colonial & Polar
16' Lengths



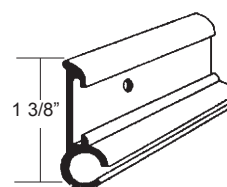
M73 Insert Gutter Awning Rail
Polar White
16' & 20' Lengths



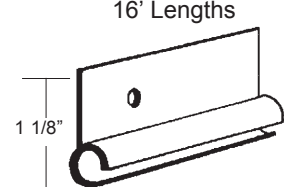
M75 Insert Awning Rail
Polar White
10' & 14' Lengths



M76 Insert Awning Rail
Mill, Colonial, Polar
20' Lengths



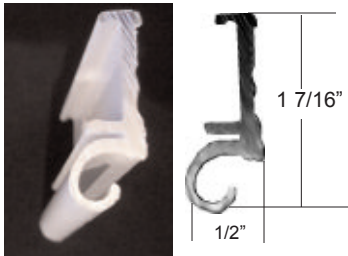
M79 Awning Rail No insert
Mill, Colonial, Polar
16' Lengths



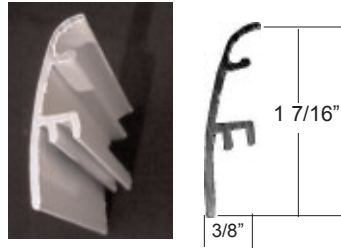
See Page 28 for Economy & Quality Inserts!

Basement Door Trims

Belt Rail Hinge
Polar White
16' lengths



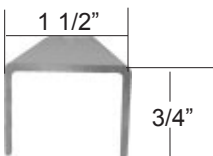
Belt Rail Hinge Cover
Polar White
16' lengths



Bottom Radius
Polar White
16' lengths

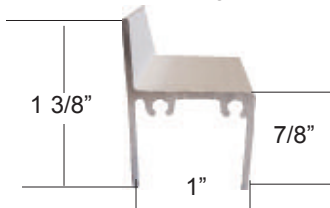


C Channel
Polar White
20' lengths

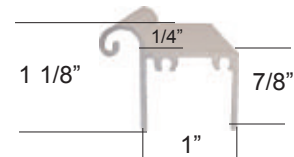


1" widths also available!

h Channel
Polar White
20' lengths

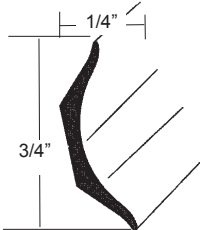


h Channel with Hinge
Polar White
20' lengths

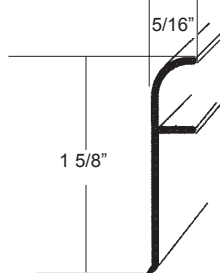


Aluminum Bath Trims

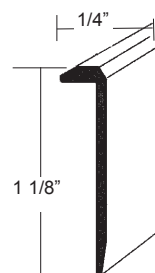
BT-12 Cove Molding
Polar or Bright Anodized
12' lengths
Used with BT-42 & BT-43



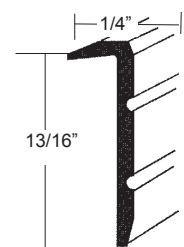
BT-14 Tub Molding
Polar or Bright Anodized
10' lengths
Used with BT-44, BT-45 & BT-46



BT-16 Corner Molding
Polar & Colonial
8' lengths



BT-18 Corner Molding
Bright Anodized only
12' lengths



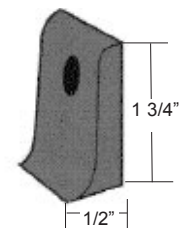
BT-42 End Cap
Polar or Bright Anodized



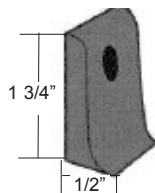
BT-43 2 Way Inside Corner
Polar or Bright Anodized



BT-44 Right Tub End
Polar or Bright Anodized



BT-45 Left Tub End
Polar or Bright Anodized

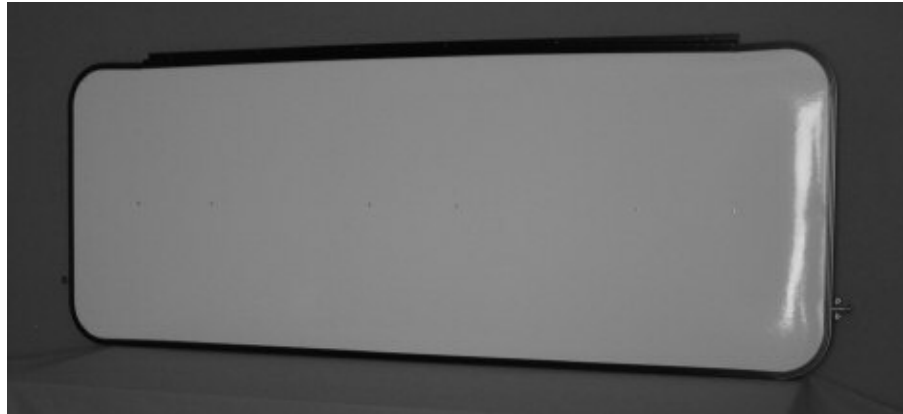


BT-46 Tub Corner
Polar or Bright Anodized



ALL BATHTUBS
& SURROUNDS
ON CLEARANCE
at
www.all-rite.com

Custom Manufactured & Shipped in 24 Hours!



Front View



Back View

All-Rite's custom Rockguards are made to your size and color specifications!
Comes complete with locking pins and arms. Choose from the following options:

Frame Color:

Aluminum (Mill)
Black
Brown
Polar
Designer Beige
Colonial

Panel Color:

Colonial Smooth
Polar Smooth
Polar Pebbled

Frame Shape:

4 Corner Radius
2 Corner Radius
Square Corner

Hardware arms are included with the rockguard or may be purchased separately in the following sizes
(outer arm length): 12", 13", 14" or 15"

All custom product is non-stock and non-returnable



Order Quote Only

Custom Rockguard Order Form

1. Frame Shape

- 4 Corner Radius
- 2 Corner Radius
- Square Corners

2. Overall Size

_____ X _____
Height Width

NOTE: If ordering from window size, we suggest adding 3" to overall height and 4" to overall width

3. Frame & Screw Cover Color

- Colonial
- Polar
- Mill
- Brown
- Black
- Designer Beige

4. Panel Color/Texture (fiberglass only)

- Colonial Smooth
- Polar Smooth
- Polar Pebbled

NOTE: Comes complete with locking pins and arms!

Ship Via: Common Carrier Will Call

Order Date: _____ P.O.#: _____

Customer #: _____

Company Name: _____

Ordered By: _____

Address: _____

Phone: _____ Fax: _____

Email: _____

Follow us on Facebook!

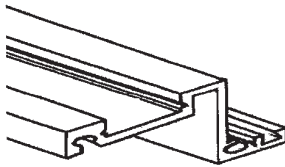
Custom rockguards are non-stock and non-returnable

All compartment doors are made to order and shipped the next business day after receipt of order.

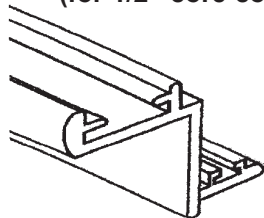
All-Rite Compartment Door Ordering Check List

- ✓ Only **ROUGH HOLE** measurements will be accepted
- ✓ Rough hole is the opening in the coach *after* the existing door and frame have been removed
- ✓ Hinge side is determined by looking at the door from the outside
- ✓ Any door, except louvered, can be insulated or single panel
- ✓ All doors are available with either square or radius frames
- ✓ Mock radius corners are also available
- ✓ Choose from Traditional, Fleetwood or custom heavy duty frames
- ✓ Choose any color or texture metal for any door
- ✓ Choice of screw cover colors
- ✓ Prices are determined by the type and size of door.
- ✓ When pricing, be sure to add for options such as extra locks or wooden crates

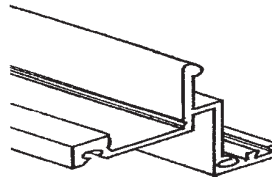
Available Frame Styles (for 1/2" core compartment doors only)



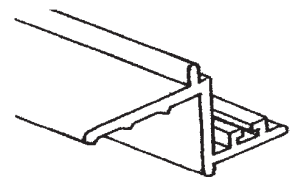
Traditional Square
1" flange
7/8" from Rough Hole



Traditional Radius
7/8" flange
3/4" from Rough Hole



Fleetwood Square
1" flange
7/8" from Rough Hole



Fleetwood Radius
7/8" flange
3/4" from Rough Hole

Unique and Unusual Doors are No Problem!

We can build products for virtually ANY industry. Call today for ordering and pricing information



All custom product is non-stock and non-returnable



Order Quote Only

Custom Compartment Door Order Form (1/2" core)

1. Frame Shape

- Square Radius (min 9" H or W)
 Mock Radius (square w/ plastic radius corners)

2. Frame Style

- Traditional
 Fleetwood

3. Rough Hole Size

_____ X _____
Height Width

4. Door Type

- Single Panel Water Heater
 Insulated LP/Battery
 Full Louvered

5. Hinge Location

- Right Left
 Top Bottom

6. Frame Color

- Mill Colonial
 Polar Black
 Brown Designer Beige

7. Lock Type

- Key Lock Qty: _____
 Twist Lock Qty: _____
 T-Handle Qty: _____
 w/deadbolt bars without

8. Color & Texture

- Metal Fiberglass
Texture: _____
Color: _____

9. Screw Cover Color

- Colonial Polar
 Black Brown Des. Beige

10. Options

- Generator Door
Expanded Alum Width _____ Location _____
 Split Door Half Door
 Cable Hatch Location _____

Draw Your Door



Ship Via: Common Carrier Will Call

Order Date: _____ P.O.#: _____

Customer #: _____

Company Name: _____

Ordered By: _____

Address: _____

Phone: _____ Fax: _____

Custom compartment doors are non-stock & non-returnable

Custom Manufactured Basement Compartment Doors

Used on most late-model Class "A" motorhomes or any high-end coaches with basement storage.



- ▶ Manufactured in just 3 days!
- ▶ Custom height and width combinations
- ▶ Custom radius bottom bends
- ▶ Angled bottoms also available
- ▶ .040 or .050 gauge Polar metal or .063 Mill
- ▶ 1- 2" overall thickness
- ▶ Heavy duty z-channel aluminum frame
- ▶ Tri-Mark 60-460 lock or twist and key locks



- ▶ Flat fiberglass or metal doors
- ▶ Custom sizes
- ▶ Hinged on belt rail molding (pg 43)
- ▶ Square or angled
- ▶ Available in all our metal or fiberglass color/patterns
- ▶ 1" - 2" overall thickness
- ▶ TriMark 60-460 lock or twist and key lock

NOTE: Most doors are built using your existing door as a pattern. If available, we may use parts from your old door, such as hinges, to create a more original finish. If parts are used, your original door will not be returned. To expedite the quote process, please email pictures and/or mail in actual door sample

Heavy Duty Compartment Doors

(1" or 1 1/2" core)



4" radius



3" radius

- ▶ Built and shipped in just 2 Days!
- ▶ 3 or 4" radius available
- ▶ 3" radius available with 1" or 1 1/2" core
- ▶ 4" radius only available with 1 1/2" core (entry door extrusion)
- ▶ No size restrictions
- ▶ Ideal for heavy duty applications
- ▶ Features a double seal
- ▶ Better Insulation
- ▶ Full radius, half radius or square
- ▶ Single corner radius also available
- ▶ Accepts heavy-duty entry door style locks or key & twists
- ▶ Available in all of our fiberglass or metal options
- ▶ Extrusion can be used in entry doors without screens
- ▶ Perfect for specialty vehicles or basement model RV's

All custom doors are non-stock and non-returnable!



Order

Quote Only

Custom Heavy Duty Compartment Door Order Form (1 or 1 1/2" core)

1. Frame Shape

- Square Radius (min 9" H or W)
- Half door (top radius/bottom square)

6. Frame Color

- Polar only

2. Rough Hole Size

_____ X _____
Height Width

7. Color & Texture

- Metal Fiberglass

Texture: _____

Color: _____

3. Core Thickness

- 1" 1 1/2"

8. Options

- Split Door
- Louvered
- Angled

4. Hinge Location

- Right Left
- Top Bottom

5. Lock Type

- Key & Twist (1" only) Qty: _____
- T-handle with cam Qty: _____
- T-Handle with deadbolt Qty: _____
- 60-460 TriMark (black)
- Trailer lock with deadbolt (white)

Draw Your Door

Ship Via: Common Carrier Will Call

Order Date: _____ **P.O.#:** _____

Customer #: _____

Company Name: _____

Ordered By: _____

Address: _____

Phone: _____ **Fax:** _____

NOTE: This form not to be used for Basement Compartment Doors. Call for quote.

Custom compartment doors are non-stock & non-returnable

Custom Compartment Doors in 24 Hours!

These are just a **FEW** of the doors All-Rite can build. Please call if you do not see the door you need!



Square or Radius Full Doors
Single Panel or Insulated
Cable hatches available located anywhere



Square or Radius Half Doors
Single Panel or Insulated
No Bottom Mounting Frame
Can also be made with square bottom main frame



Square or Radius Generator Doors
Expanded Aluminum can be located anywhere
Single Panel or Insulated



Square or Radius Split Doors
Single Panel or Insulated
Top and bottom split also available
Available with louvers

NOTE: Doors over 24" we recommend 2 locks be installed for safety

Any size, any shape
built in 24 hours!



If you don't see what
you need . . . just ask!!

View our photo gallery or request quotes on-line @ www.all-rite.com!

All custom product is non-stock & non-returnable!

Custom Aluminum Louvered Doors in 24 Hours!

These are just a **FEW** of the doors All-Rite can build. Please call if you do not see the door you need!



Square or Radius Full Louvered Doors
Full or half doors available



Square or Radius Propane/Battery Doors
Mock radius corners available



Mobile Home Water Heater Door
Single or double doors.
Insulated with sheet rock



Square or Radius Split Louvered Doors
Single panel or insulated
Right and left split available



**Plastic Mock
Radius Corners**
Available on square doors

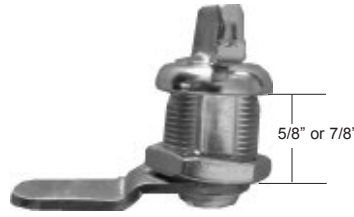
- French Beige
- Polar White
- Brown
- Black
- Designer Beige



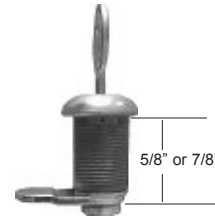
Compartment Door Parts



Heavy Duty Door Locks
 Fits doors with up to a 1 1/2" core
 Twist or 751 Key



Twist Lock
 Chrome
 Specify for single (5/8")
 or insulated doors (7/8")



751 Key Lock
 Chrome
 Specify for single (5/8")
 or insulated doors (7/8")



Cam Latch
 Fits T-handle
 Chrome



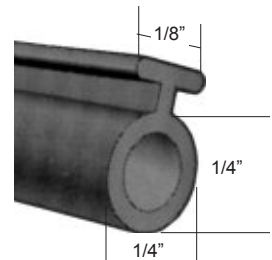
T-Handle
 Chrome or black
 Used with Cam Latch



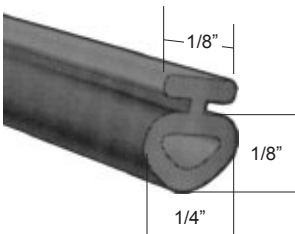
Stainless Steel Fingerpulls



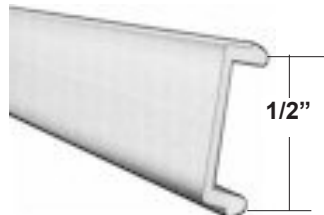
Mock Radius Corner
 Polar, Black, Brown, Designer
 Beige, French Beige



Large Bulb Seal
 Black; Purchase by the foot
 Fits All-Rite Radius Doors



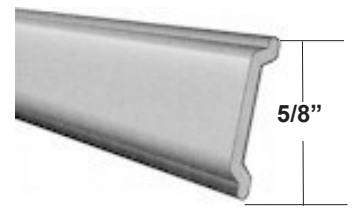
Small Bulb Seal
 Black; Purchase by the foot
 Fits All-Rite Square Doors



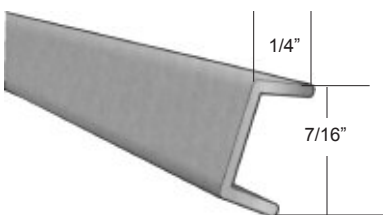
Elixir Screw Cover
 Fits All-Rite Entry & Square
 Compartment Doors
 8' Lengths: Rigid Plastic
 Colonial Polar
 Black Brown



Phillips Screw Cover
 Fits Phillips Doors &
 Phillips Square Windows
 8' Lengths: Rigid Plastic
 Colonial Polar
 Black Brown



Flexible Screw Cover
 Fits All-Rite Entry Doors, Radius
 Compartment Doors &
 Norcold Doors
 By the foot or 750' rolls
 Colonial Polar
 Black Brown



Grey Lock
 For Single Panel Doors
 Holds the metal in the frame
 8' Lengths



Cable Hatch
 2 7/8" Hole Size
 Polar or Colonial



Compartment Door Liner
 Felt-like material to line the interior of
 compartment doors & trunks
 Order by the running foot. 6' Widths
 Available in Black or Charcoal
 Can also use ceiling fabrics on pg. 17

Door Holdbacks



Plastic Door Holdback Set

P084: 3 1/2" Colonial
P085: 6" Colonial
P084W: 3 1/2" Polar
P085W: 6" Polar



Plastic Door Holdback Set

P086: 3" Colonial
P087: 5 1/2" Colonial
P089: Female piece only (set of 2)



Straight Door Holdback Set

P092: 3" Metal
P094: 4 3/4" Metal



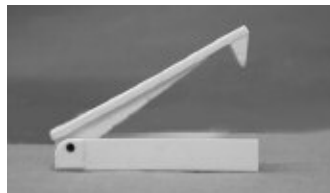
Angled Door Holdback Set

P093: 3" Metal
P095: 4 3/4" Metal



Metal Door Holdback Set

P104: 5"
P147: 2 1/2"



Door Holdback Set

P105 90° Chrome
P097W 110° Polar, Plastic



Door Stop

Black Polar
Brown Colonial

Basement Door Trims



Belt Rail Hinge

Used with basement compartment doors
Available in Polar White only
1 1/2" H x 1/2" W; 16' lengths



See page 33 for additional trims



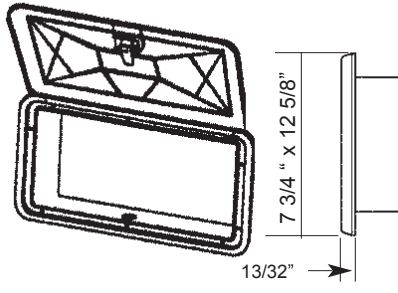
Belt Rail Hinge Cover

Used with basement compartment doors in conjunction with the Belt Rail Hinge
Available in Polar White only
1 1/2" H x 3/8" W; 16' lengths

NOTE: Does not include clips

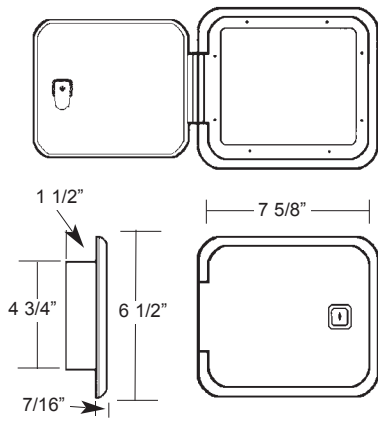


**Large Multi-Purpose Access Hatch
 U235P Polar**



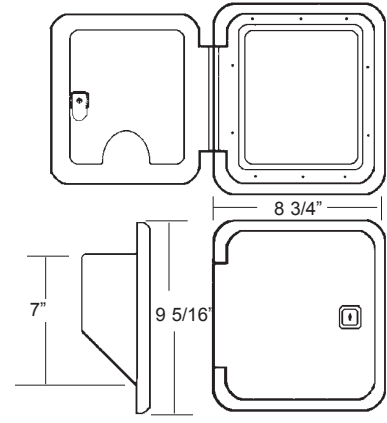
Cut Out Dimensions
 6" h x 11 1/16" w

**Multi-Purpose Hatch w/o Back
 U220C Colonial or U225P Polar**



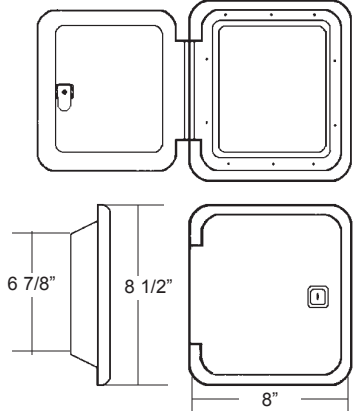
Cut Out Dimensions
 4 3/4" h x 5 7/8" w

**Multi-Purpose Hatch w/o Back
 U200P Polar**



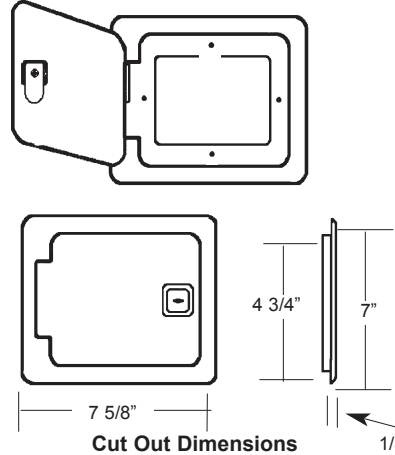
Cut Out Dimensions
 7" h x 6 3/8" w

**Multi-Purpose Hatch w/o Back
 U215P Polar**



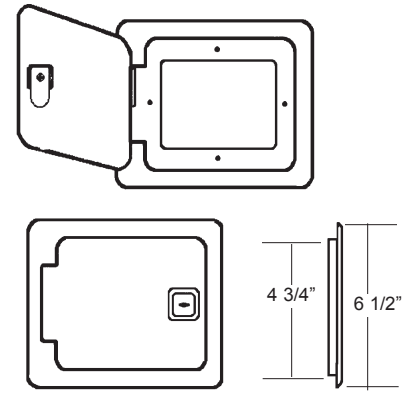
Cut Out Dimensions
 6 7/8" h x 6 3/8" w

**Multi Purpose Hatch - Flush Mount
 RAE01**



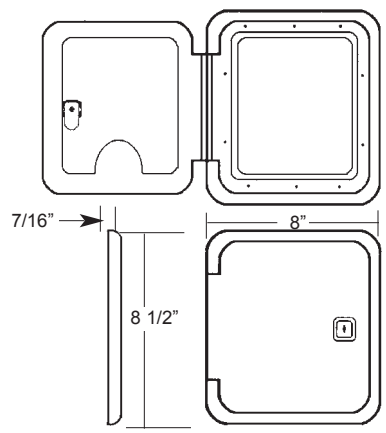
Cut Out Dimensions
 6" h x 6" w

**Multi Purpose Hatch
 MFE01**



Cut Out Dimensions
 4 3/4" h x 4 1/4" w

**Gas Hatch
 G500C Colonial or G505P Polar**



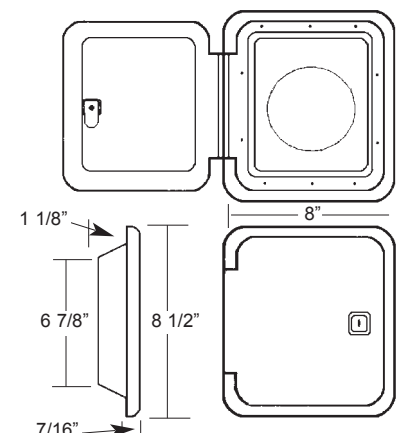
Cut Out Dimensions
 6 7/8" h x 6 3/8" w

Check out special clearance prices on-line at www.all-rite.com!

All hatches can be ordered on-line 24/7



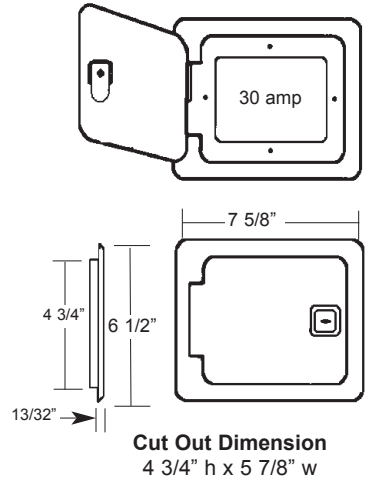
**Oval Gas Hatch w/ Flat Back
 G510C Colonial or G515P Polar**



Cut Out Dimensions
 6 7/8" h x 6 3/8" w ; 5" oval

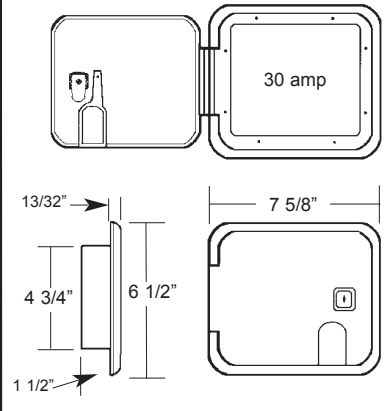


**Medium Electric Cable Hatch
E415P Polar**



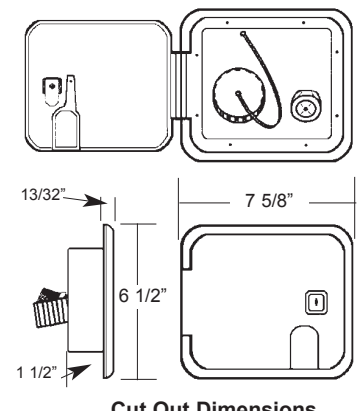
Cut Out Dimension
4 3/4" h x 5 7/8" w

**Medium Electric Cable Hatch
E420Colonial or E425P Polar**



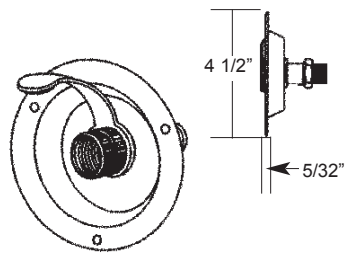
Cut Out Dimensions
4 3/4" h x 5 7/8" w

**Water Center w/1 Piece Brass
Check Valve (1/2" MPT)
W600C Colonial or W605P Polar**



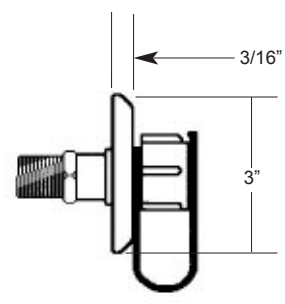
Cut Out Dimensions
4 3/4" h x 5 7/8" w

**City Water Dish
with Brass Check Valve
W630C Colonial or W635P Polar**



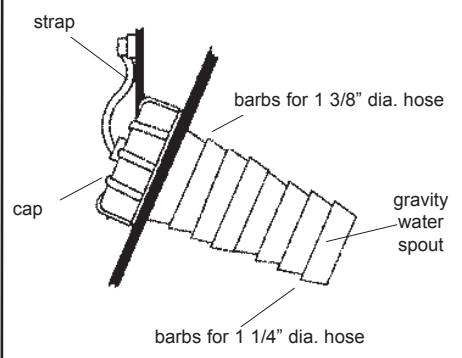
Cut Out Dimension
3 1/2" diameter

**City Water Flange w/1 Piece
Brass Check Valve
W645P Polar or W640 Colonial**

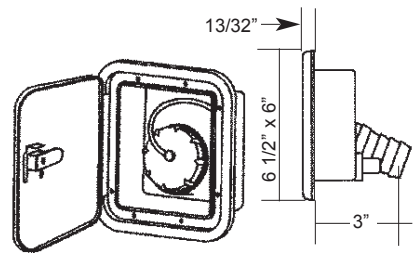


Cut Out Dimensions
1 1/2" Diameter

**Cap, Strap & Spout Replacement
Set for Gravity Water Fills
W650 Polar**

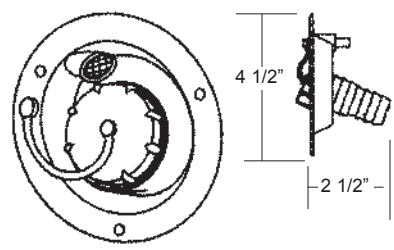


**Gravity Water Hatch
W655P Polar**



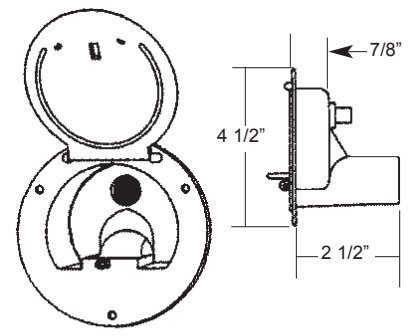
Cut Out Dimensions
4 3/4" h x 4 1/4" w

**Gravity Water Dish
W670C or W675P Polar**



Cut Out Dimensions
3 1/2" diameter

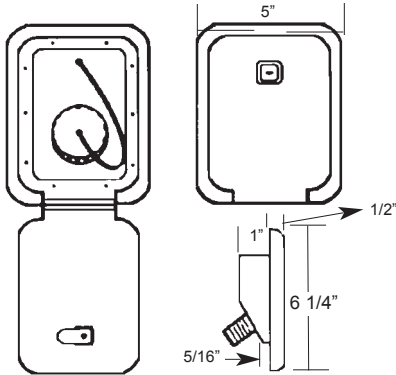
**Lockable Gravity Water Hatch
W680C Colonial or W685P Polar**



Cut Out Dimension
3 1/2" diameter

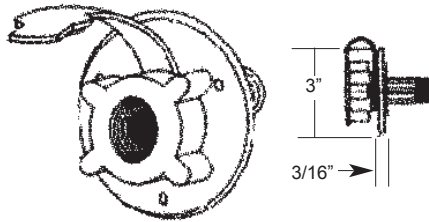


**Gravity Water Hatch
 W690C Colonial or W695P Polar**



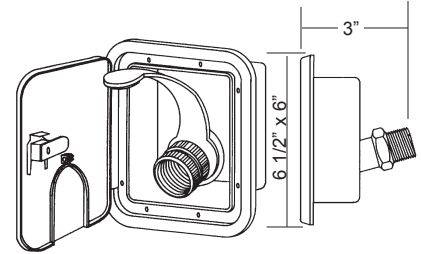
Cut Out Dimensions
 4 3/8" h x 3 1/8" w

**City Water Flange w/
 Plastic Check valve
 W705P Polar**



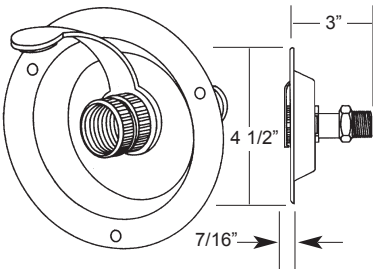
Cut Out Dimension
 1 1/2" diameter

**City Water Hatch
 W715P Polar**



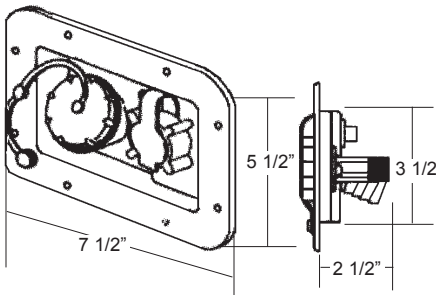
Cut Out Dimensions
 4 3/4" h x 4 1/4" w

**City Water Dish
 with Plastic Check Valve
 W725P Polar**



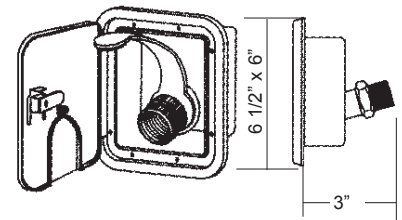
Cut Out Dimensions
 3 1/2" Diameter

**City/Gravity Water Center
 Flush Mount
 W735P Polar**



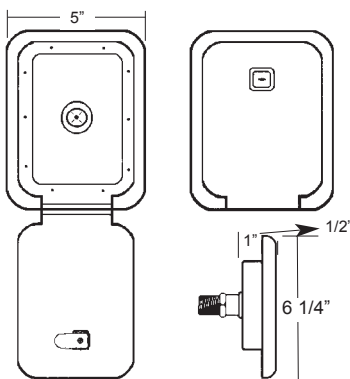
Cut Out Dimensions
 3 3/4" h x 6" w

**City Water Hatch
 W610C Colonial only**



Cut Out Dimensions
 4 3/4" h x 4 1/4" w

**W620C City Water Hatch w/ 1
 Piece Brass Check Valve**



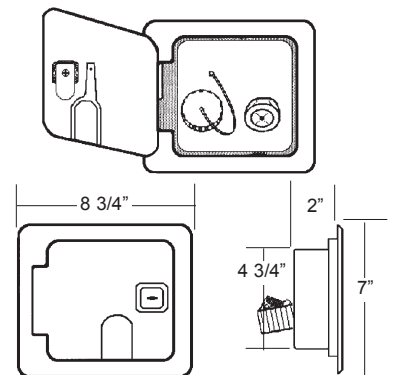
Cut Out Dimensions
 4 3/4" x 3 1/8"; 1/2" M.P.T fitting

Check out special
 clearance prices on-line
 at www.all-rite.com!

All hatches can be
 ordered on-line 24/7



**Water Center Hatch
 Brass Check Valve
 13C11-6**



Cut Out Dimensions
 6" h x 7 3/4" w
 1/2" M.P.T. Fitting

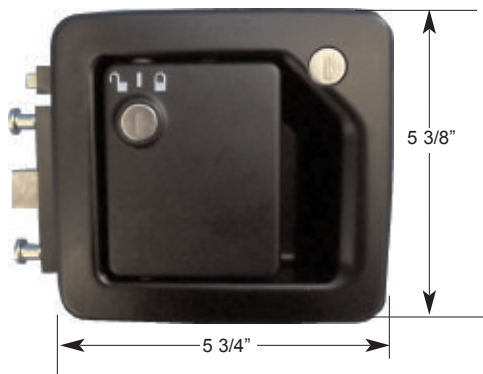
Tri/Mark Locks

60-650 Series Lock

Motorhome Entry Door with Dead Bolt Option

Designed for door applications that use a plunger latching mechanism
Available in Black only

(Can be used in All-Rite Entry Doors)

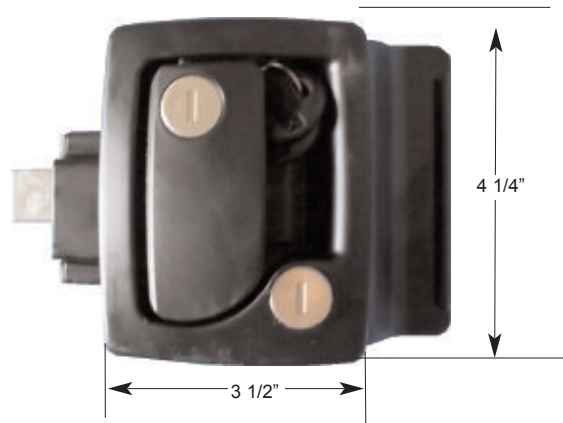


60-251 Series Lock

Travel Trailer Latch with Built in Dead Bolt

Available with both key cylinders keyed alike
Available in Black only

(Can be used in All-Rite Entry Doors)

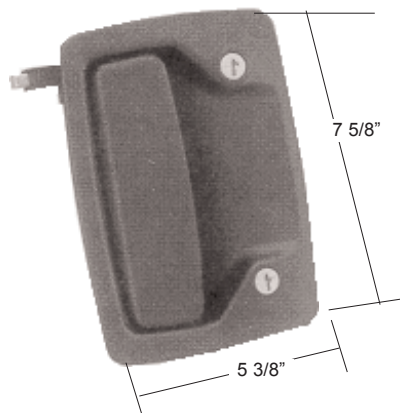


30-900 Series Lock

Motor Home Entry Door with Dead Bolt

Designed for door applications that require a rotary-type latching mechanism

Available with black face and colonial back
(Can not be used in All-Rite Entry doors)

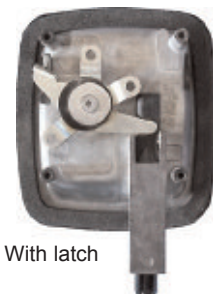


60-460 Series Baggage Door Lock

Features a modern styled paddle. Black only.
Specify with or without latch

Front

Back



With latch

Front

Back



Without latch

60-460 Plunger Bolt Sold separately



5 1/4"

4 3/4"

**NOTE: All Tri/Mark locks are IN STOCK and available for immediate shipment!
For your convenience, you can also order on-line 24/7 at www.all-rite.com!**

Custom Entry Doors in 48 Hours!



Custom Radius or Square Standard Entry Doors



Custom Angled Entry Doors
All-Rite doors have a 1 1/2" core and radius doors fit a standard 4" radius cut out



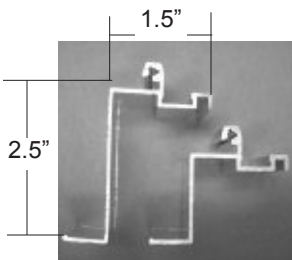
Steel Reinforcement Available on Any Style Entry Door



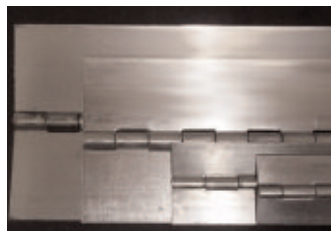
Custom Double Entry Doors



Custom wheel chair accessible door



Entry Door Extrusion
2 1/2" depth on larger
1 1/2" depth on smaller
Both have 1 1/2" flange



Piano Hinge
Stainless steel or Aluminum
Available as option on any door or sold individually in a variety of sizes

Follow us on Facebook!





Order Quote Only

Custom Entry Door Order Form

1. **Frame Style**

- Square Radius Top
- Full Radius Angled
- Double Steel Framed
- Narrow Extrusion (no screen)

2. **Rough Hole Size**

_____ X _____
Height Width

NOTE:
Pass-through size is approx. 2" less than rough hole size

3. **Hinge Location**

- Right Left
(facing the door from the outside)

4. **Frame Color**

- Mill Colonial
- Black Polar

5. **Screen Door**

- Yes No
- Screen Frame Color: _____

6. **Window Type**

- Radius Corner Plastic Frame (12" x 21")**
Glass: Clear Tinted Obscure
Int. Frame: Brown Black Colonial Polar Des. Beige
Ext. Frame: Brown Black Colonial Polar Des. Beige
- Square Plastic Frame (12" x 12")**
Frame color: Brown Black Glass Type: Clear Tinted
- Square Slider Window - Mill Finish, Obscure Glass (14" x 28")**
- Custom Window (order separately)**
- No Window**

7. **Kick & Bubble Panel Color**

- Black Brown
- Polar Colonial

8. **Lock Type**

- Knob/Lever Deadbolt
- Knob/Knob (no screen)
- TriMark 60-251 Black
- TriMark 60-650 Black
- Trailer Lock w/deadbolt...White

9. **Color & Texture**

- Exterior: _____
- Metal Fiberglass
- Interior: _____
- Metal Fiberglass

10. **Screw Cover Color**

- Black Colonial
- Polar

11. **Threshold**

- Yes No

Ship Via: Common Carrier Will Call

Order Date: _____ **P.O.#:** _____

Customer #: _____ **Ordered By:** _____

Company Name: _____

Address: _____

Phone: _____ **Fax:** _____

Custom entry doors are non-stock and non-returnable

Entry Door Parts



Knob/Lever or Knob/Knob
Mill only
Fits 2 3/8" & 2 3/4" backset
Fits doors 1 3/8" - 1 5/8" thick



Deadbolt
Mill only
Available keyed alike
Fits 2 3/8" backset
Fits doors 1 3/8" - 1 3/4" thick



Trailer Lock w/ Deadbolt
White



Screen Door Latch
Black; Right or Left hinged
Stainless steel spring
Mounting screws
NOT included



14" x 28" Square Slider
Mill Finish
Obscure glass w/ screen



12" x 21" Radius Window Frame
Interior or Exterior
Colonial, Polar, Black, Brown,
Designer Beige
Replacement glass sold separately



Square Window Frames 12" x 12"
Interior or Exterior
Black, Brown



Threshold
Mill; 1 7/8"
Order by the inch



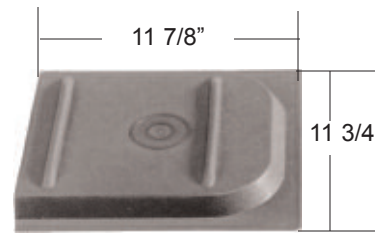
Door Stop
Black, Brown
Polar, Colonial



Roller Catch
(sold in pairs)



Screen Door Magnet
(sold in pairs)



Bubble Slider
Black, Brown,
Polar, Colonial



Screen Door Handle
1 7/8" x 11 1/4"
Black, Brown,
Polar, Colonial

Weatherstripping



1/4" x 1/2" Grey
Polyethylene; 35' rolls
One sided adhesive
Seals screen door to
main frame



1/4" x 1/2" White
Polyethylene; 35' rolls
One sided adhesive
Seals door to
main frame



1/8" x 1/4" Grey
Vinyl; 75' rolls
One sided adhesive
Seals door locks &
window frames to doors



1/8" x 1/4" Black
Vinyl; 75' rolls
Double sided glazing tape
Seals glass to plastic
radius frames



Custom Screen Door Order Form

Order

Quote Only

1. Screen Shape

- Square Corner
 Radius Top

5. Frame Color

- Mill Colonial
 Polar Black

2. Overall Size

_____ X _____
Height Width

(Measure ACTUAL door and **NOT** the rough hole!)

6. Bubble and Kick Panel

- Black Brown
 Colonial Polar

3. Lock Center

Dimensions from bottom of screen
to the center of the lock(s)
(see page 52 for how to measure)

7. Latch Types

(not included w/ door, purchase at add'l cost)

- Magnet Catches (2)
 Screen Latch
 Roller Catch (1)

4. Hinge Location

- Right Left

(Standing outside the coach facing the door)

Ship Via:

UPS
(Unassembled Square Only)

Common Carrier
(Assembled - Square or Radius)

Will Call

Order Date: _____ **P.O.#:** _____

Customer #: _____

Ordered By: _____

Company Name: _____

Address: _____

Phone: _____ **Fax:** _____

Email: _____

You can also get custom quotes on-line 24/7 at www.all-rite.com!

Custom screen doors are non-stock and non-returnable

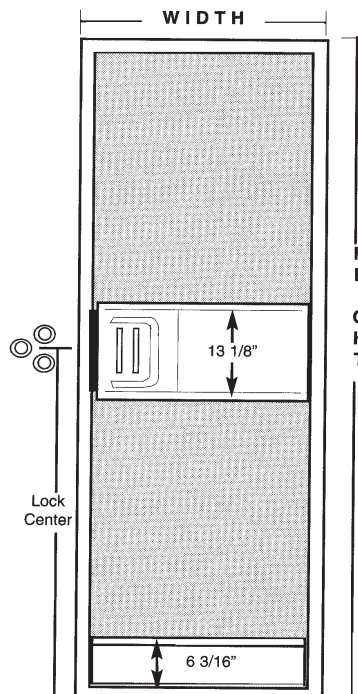


Custom Replacement Screen Doors

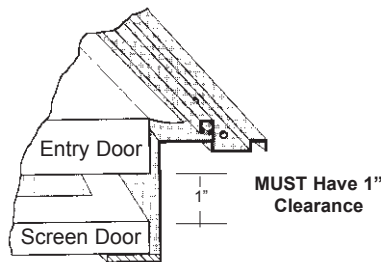
All doors are made to order and shipped the next business day after the order is received. Radius doors must ship assembled via common carrier and square doors can ship unassembled via UPS or assembled via common carrier.

IMPORTANT: Screen doors can only be installed if the entry door was **ORIGINALLY** built to accommodate a screen and the original hinges are still intact!

Hinges are **NOT** included with All-Rite replacement screens.



Included with Screen:
Screen door handle
Bubble slider
Kick panel



Available for Purchase:
Screen door magnets
Roller catches
Hinges



Two Methods of Measuring for Your New Screen Door:

- #1 Measure the ACTUAL screen door size, both height and width
- #2 Measure the inside of the ENTRY door frame and SUBTRACT 1/2"

DO NOT MEASURE THE ROUGH HOLE OPENING!

Order

Quote Only

Custom Replacement Screens in 24 Hours ANY Size!

Fits ANY All-Rite Window and Will Work with Most Other Brand of Windows

Screen Shape - Exterior View

(Indicate one shape by checking the appropriate box)



Radius Passenger Side Slider



Radius Drivers Side Slider



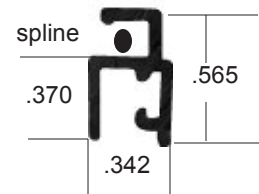
Angled (template required)



Vertical



Fits Square Sliders, Square Torque Windows & Radius Torque Windows



Profile of screen extrusion

Frame Color

- Black
 Polar

Radius

- 3" (standard RV)
 2 3/4"

Screen Size

(measure overall size of screen only)

_____ X _____
Height Width

Ship Via: UPS Common Carrier Will Call

Order Date: _____ P.O.#: _____

Customer #: _____

Ordered By: _____

Company Name: _____

Address: _____

Phone: _____ Fax: _____

Email: _____

All custom screens are non-stock and non-returnable



Custom All-Rite windows in any shape and size in just 48 hours!
Here are just a few samples of our work



- ◆ All windows have a 3" radius
- ◆ Windows are clamp ring mounted for a smooth exterior appearance
- ◆ Heavy duty aluminum construction and latch type locks



Check us out online at www.all-rite.com to see more samples of our custom work!





Custom Window Order Form

NOTE: All windows have a 3" radius

Order

Quote Only

1. Frame Style (check all that apply)

- Radius Square
- Exit Insulated (excludes Bay)
- Angled (provide template)

5. Clamp Ring Color

- Black
- Polar

2. Window Style

- Passenger Side Slider
- Driver Side Slider
- Slider Picture Slider
- Picture Window
- Bay Window

6. Wall Thickness

Opener Width (Bay only)

- 11" 17" 23" 29" 35" 41"

3. Rough Hole Opening

_____ X _____
 Height Width

7. Glass Color

- Clear
- Light Grey
- Dark Grey
- Clear Polycarbonate (single pane)

4. Frame Color

- Black Polar

Ship Via: UPS Common Carrier Will Call

Order Date: _____ P.O.#: _____

Customer #: _____

Ordered By: _____

Company Name: _____

Address: _____

Phone: _____ Fax: _____

Email: _____

Custom windows are non-stock & non-returnable



Custom Vertical or T-Slider Order Form

NOTE: All windows have a 3" radius

Order

Quote Only

1. Window Style

- Vertical Slider
- T-Slider
 - Passenger Side Slider
 - Driver Side Slider

5. Clamp Ring Color

- Black
- Polar

2. Frame Style (check all that apply)

- Radius (7" min) Exit
- Square Insulated
- Angled (provide template)

6. Wall Thickness

3. Rough Hole Opening

_____ X _____
Height Width

7. Glass Color

- Clear
- Light Grey
- Dark Grey

4. Frame Color

- Black
- Polar

8. Slider Height

- 1/3 ht of window
- 1/4 ht of window
- 1/2 ht of window
- Custom _____

Ship Via: UPS Common Carrier Will Call

Order Date: _____ P.O.#: _____

Customer #: _____

Ordered By: _____

Company Name: _____

Address: _____

Phone: _____ Fax: _____

Email: _____

Custom windows are non-stock & non-returnable



Custom Torque Window Order Form

NOTE: All windows have a 3" radius

- Order
- Quote Only
- 1. Frame Style** (select all that apply)
 - Radius (21" width min) Exit
 - Square (18" width min) Angled (provide template)
- 2. Rough Hole Height**
 - 15 1/8"
 - 18"
 - 22 1/8"
 - 26 3/8"
 - 29 1/8"
- 3. Rough Hole Width**

- 4. Torque Opener Size**
 - 11 17 23
 - 29 35 41
- 5. Glass Color**
 - Clear
 - Light Grey
 - Dark Grey
- 6. Torque Location**
 - Single Row
 - Right Offset
 - Left Offset
- 7. Frame Color**
 - Black Polar
- 8. Clamp Ring Color**
 - Black
 - Polar
- 9. Wall Thickness**

Ship Via: UPS Common Carrier Will Call

Order Date: _____ P.O.#: _____

Customer #: _____

Ordered By: _____

Company Name: _____

Address: _____

Phone: _____ Fax: _____

Email: _____

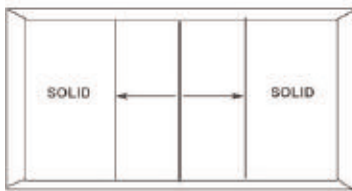
Custom torque windows are non-stock and non-returnable



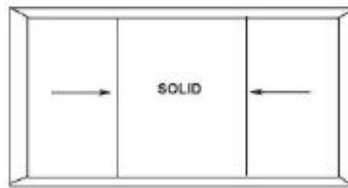
NEW Custom Concession Windows

Built to Your Specifications & Shipped in 4 Days or less!

All-Rite can custom manufacture virtually any concession window. Below are just a few examples of window configurations we can build in 4 days or less. We build our windows off of your rough hole size, so we can create ANY height and width combinations you need! All All-rite windows are made from heavy duty aluminum with an 7/8" flange and are clamp ring mounted for a smooth exterior appearance.



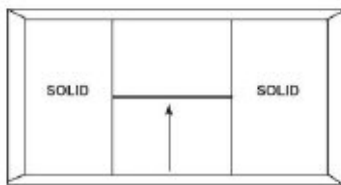
Style #1



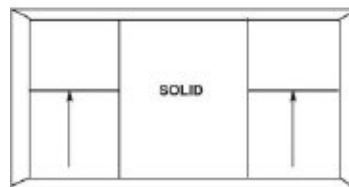
Style #2



Style #3



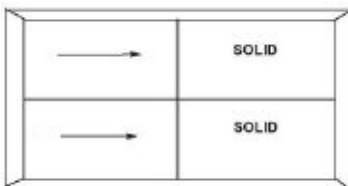
Style #4



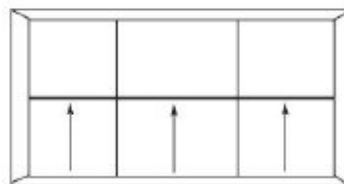
Style #5



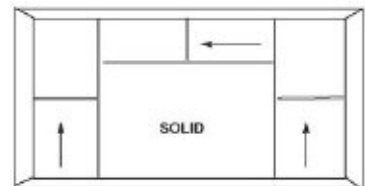
Style #6



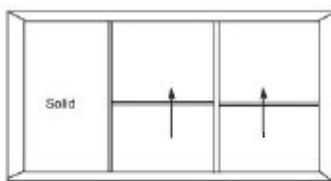
Style #7



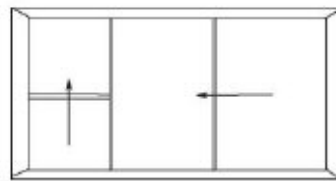
Style #8



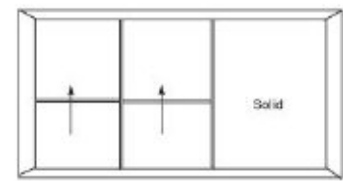
Style #9



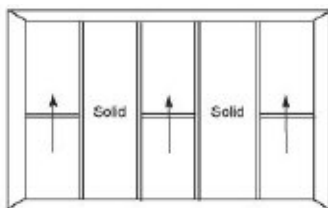
Style #10



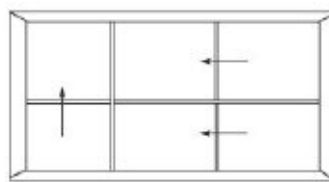
Style #11



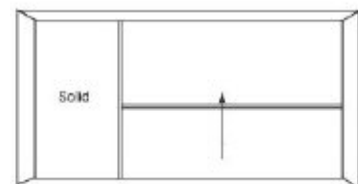
Style #12



Style #13



Style #14



Style #15

Follow us on Facebook!





Custom Concession Window Order Form

NOTE: All windows have a 3" radius

Order

Quote Only

1. Frame Style

- Radius
- Square

5. Clamp Ring Color

- Black
- Polar

2. Window Style (Styles #1 - 15 on pg 58)

- _____
- Other (attach drawing)

6. Wall Thickness

3. Rough Hole Opening (in inches)

_____ X _____
Height Width

7. Glass Color

- Clear
- Light Grey
- Dark Grey

4. Frame Color

- Black
- Polar

8. Options

- Insulated
- Window Covering

Ship Via: UPS Common Carrier Will Call

Order Date: _____ P.O.#: _____

Customer #: _____

Ordered By: _____

Company Name: _____

Address: _____

Phone: _____ Fax: _____

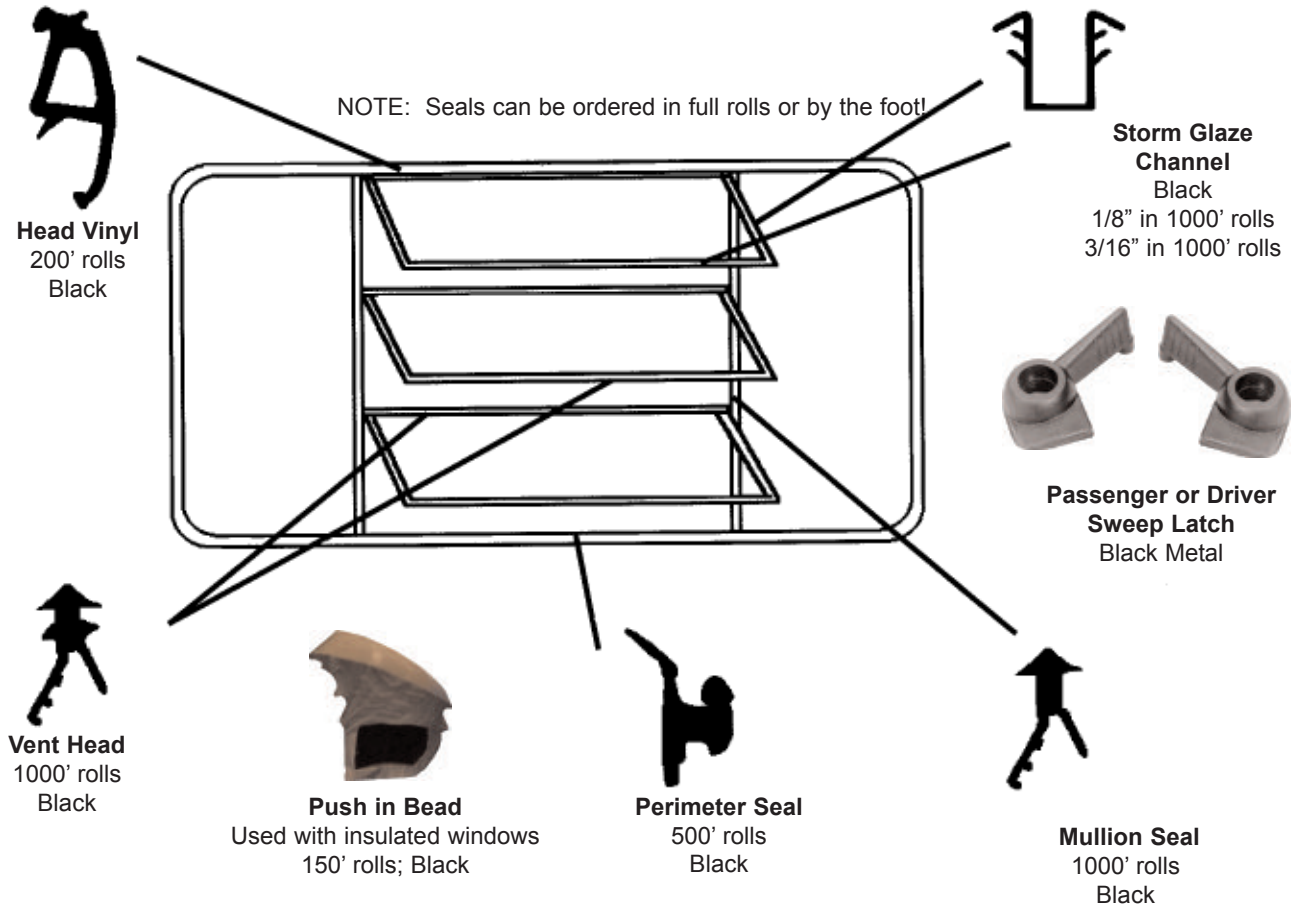
Email: _____

Custom concession windows are non-stock & non-returnable



All-Rite Window Parts

All-Rite window seals will fit most Kinro windows. Not suitable for Hehr windows.
See page 61-62 for Hehr window parts.



Kinro Window Parts



Hehr Window Plastics



3/4" Radius Screw Cover
500' Roll or by the foot
Black, Brown or Polar



1/2" Radius Screw Cover
500' Roll or by the foot
Black, Brown, Polar



Rigid Screw Cover
Black, Brown,
Polar, Colonial
8' Sections



3/16" or 1/8" Glazing Bead
400' Roll or by the foot
Black, Brown, Polar



4900 Top Vent Seal
For Square Torque Windows
1000' Roll or by the foot
Black or Brown



4900 Bottom Vent Seal
Square or Radius Torques
1000' Roll or by the foot
Black



5900 Vent Seal
For Radius Slider Windows
300' Roll or by the foot
Black



7900 Top Seal
For Radius Torque Windows
250' Roll or by the foot
Black or Brown

Hehr Window Latches



Window Latch
Black Plastic
Comes with screws



Sweep Latch
Universal
Black Plastic



Emergency Latch
Red Metal



Escape Handle
Red Metal

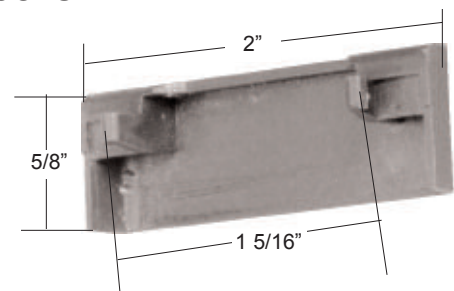
Weep Hole Covers/Corner Blocks



Extruded Corner Block
3" Radius; 1' Lengths
Cut to correct wall thickness



5/16" Weep Hole Cover
Black or Brown

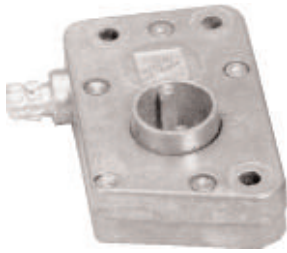


5/8" Weep Hole Cover
Black or Brown

**** Create an on-line account and order 24 hours a day and weekends! ****



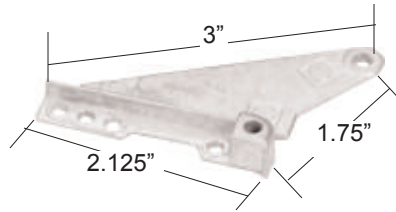
Torque Window Hardware



Torque Operator
Left Hand



Torque Operator
Right Hand

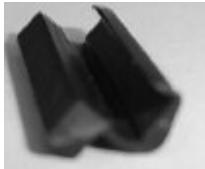


Torque Bracket
Sold in pairs only



Torque Knob
13/16" or 1 5/16"
Black, Brown, Polar

Screen Clips



4700 Bottom
Screen Clip
Black



4900 Series
Screen Clip
Polar



7900 Bottom
Screen Clip
Black



7900 Top
Screen Clip
Black

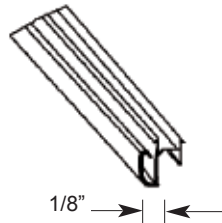
Window Tracks



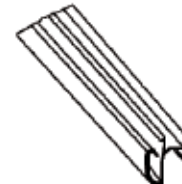
Top Track
4700 Series
8' lengths
(GA only)



Screen Track
4700 Series
6' lengths



#59 Anti-Rattle Clip
6' lengths; Black
For Hehr 5900 Sliders



#69 Anti-Rattle Clip
8' lengths; Black
For Hehr Slider Windows

Corner Blocks



#318
3 7/16" Radius
90° angle
1 3/8" wide

#318-88A
2 5/8" Radius
90° angle
1 1/2" wide

#122
2 1/2" Radius
90° angle
1 3/8" wide

#401-A
3 3/16" Radius
90° angle
1 1/2" wide

Universal Ladders & Racks

501-R Rack

Adjustable from 90" to 94"
Fits all Recreational Vehicles



Custom All-Rite Roof Racks also available!!
Any size or shape in 24 hours

Bunk Ladder

60" or 66"
Anodized, satin finish
Supports up to 300 lbs.



502-L Straight Back Ladder

- ♦ Available for straight back coaches
- ♦ 75" standard length, adjustable to 78"
- ♦ Easily converts for bumper mounting
- ♦ Comes with 6 steps, 2" wide and 2 stand offs
- ♦ Ladder and rack are packaged in separate boxes for UPS shipment
- ♦ Supports approx. 225 pounds

Stand Off

6", 8", 10" or custom lengths



Ladder Mounts



Custom Assist Handles



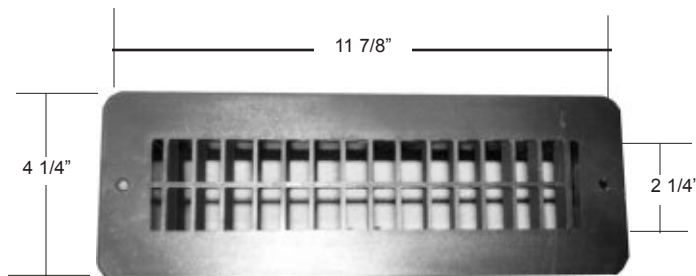
Rack Bracket



Miscellaneous Parts

Floor Registers

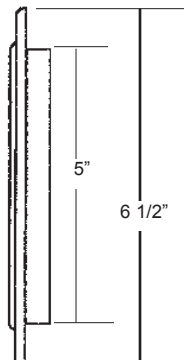
Made from molded thermoplastic.
Won't rust, scratch or peel.
Available in Polar White dampered or undampered
and Tan or Dark Grey undampered only.



Hole cut out size is 2 3/8" x 10"

Ceiling Grills

Directional air flow, fade resistant and a textured finish. Available in Polar White and dampered only.





All-Rite Custom Manufactured Ladders

Choose your shape, fill in your dimensions and your custom ladder is on its way in 24 hours!

If you don't see the shape you need below, simply draw your ladder in the space provided on page 65.

Shape 1 Shape 2 Shape 3

□ straight cut bottom
□ looped bottom

Width of Ladder: * _____

Bottom of Ladder to First Step: _____

Number of Steps: _____

*** NOTE: All measurements are from the center of tubing and/or center of foot.**

Ladders over 144" require a splice kit. Kit includes two 3" tubes and 8 rivets or screws

Order Date: _____ P.O. #: _____

Customer #: _____ Ordered by: _____

Company Name: _____

Address: _____

Phone: _____ Fax: _____

Custom ladders are non-stock and non-returnable

All-Rite Custom Manufactured Ladders

Draw your ladder shape below or choose from the shapes on page 64. Fill in your dimensions as shown in the example and your custom ladder is on its way in 24 hours!

Our ladders can be shipped via ups to save you money!

Draw the side view or silhouette of your ladder, then fill in the required dimensions as shown on page 64.



Ladder splice for UPS shipping

Ladders over 144" must be spliced.
Splice kits include two, 3" tubes and 8 rivets or screws.

Additional Information Requirements:

Width of Ladder *:	_____
Bottom of Ladder to First Step:	_____
Number of Steps:	_____

All-Rite does not attach stand-offs to our ladders. You attach them to the coach using the existing holes!
All-Rite ladders come standard with 2 sets of stand-offs. Additional sets can be purchased.

*** NOTE: All measurements are from the center of tubing and/or center of foot.**

Order Date: _____ P.O. #: _____

Customer #: _____ Ordered by: _____

Company Name: _____

Address: _____

Phone: _____ Fax: _____

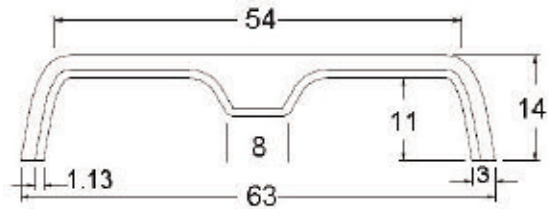
Email: _____

Custom ladders are non-stock and non-returnable

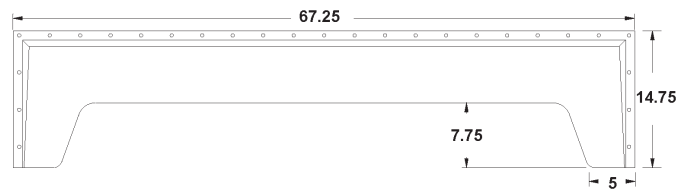
Plastic In-Stock Tandem Fenderskirts

The following fender skirts are carried in stock and are available for IMMEDIATE shipment from both our California and Georgia locations. All skirts are sold individually or in pairs and are available in Polar White.

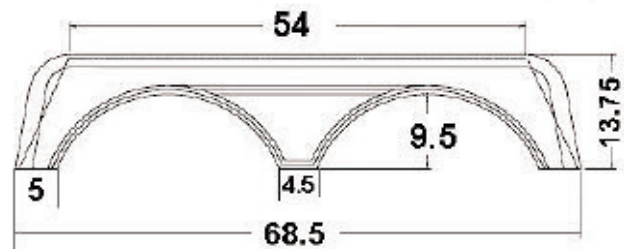
T104
Textured



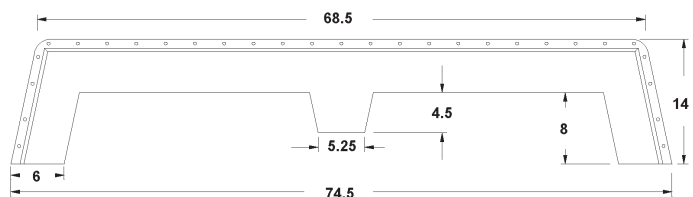
T110
Textured



T118
Textured
Max wheel well 54" x 67 3/4"



T123
Textured

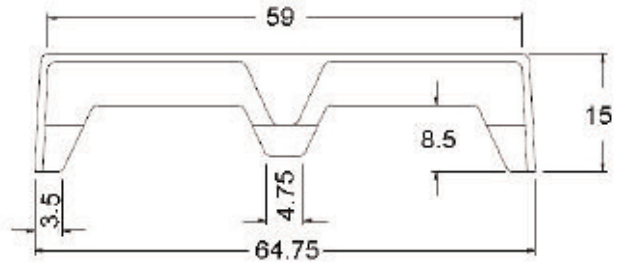


All fenderskirts can also be viewed and ordered on-line at www.all-rite.com 24/7!

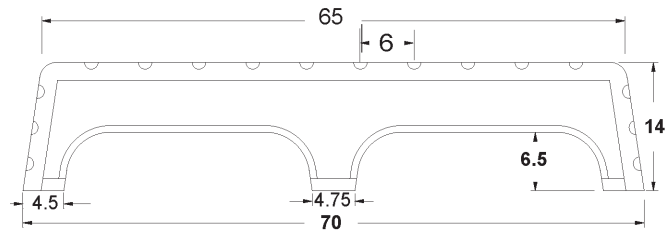


Plastic In-Stock Tandem Fenderskirts

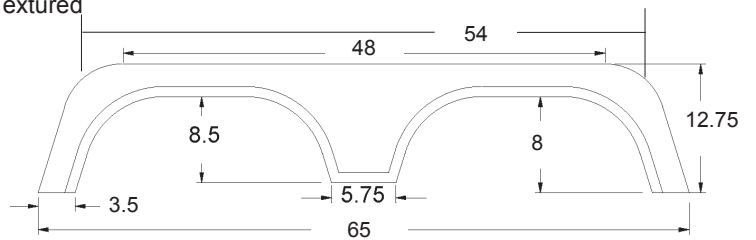
T130
Textured



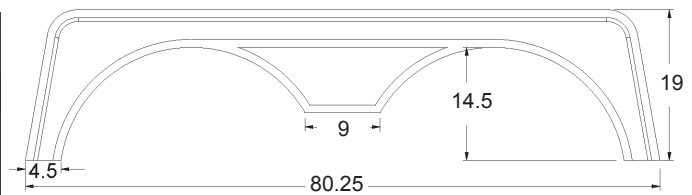
T132
Textured



T136
Textured

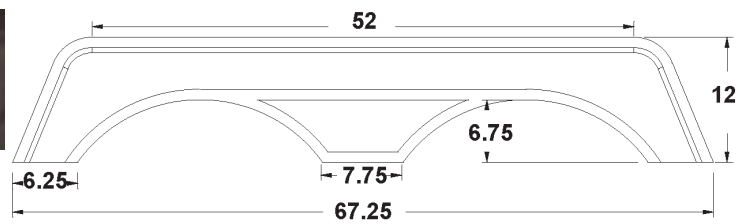


T144
Smooth

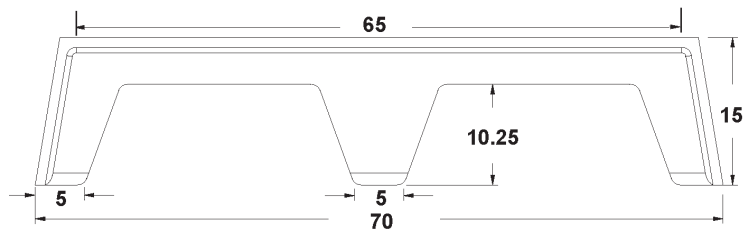


Plastic In-Stock Tandem Fenderskirts

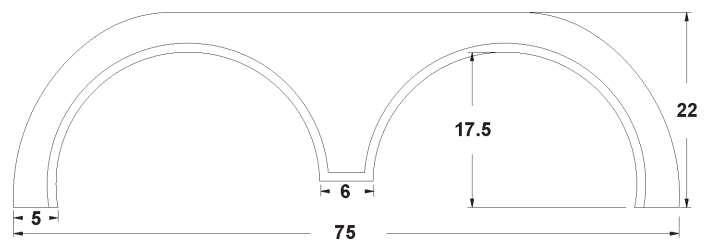
T171
Textured



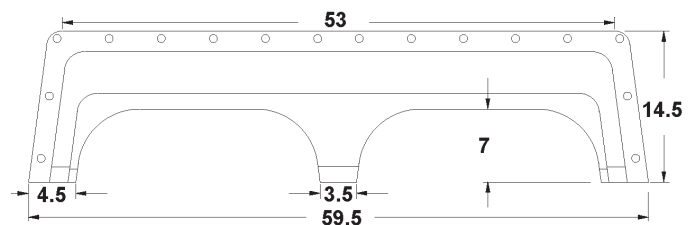
T183
Textured



T191
Textured



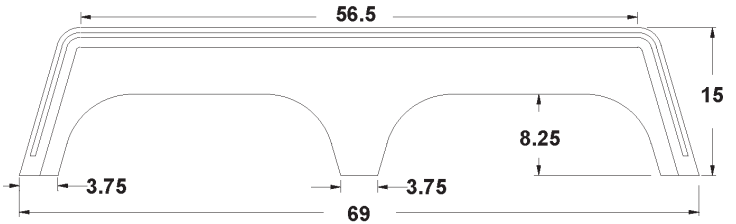
T192
Textured



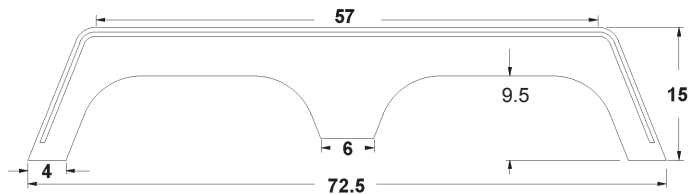


Plastic In-Stock Tandem Fenderskirts

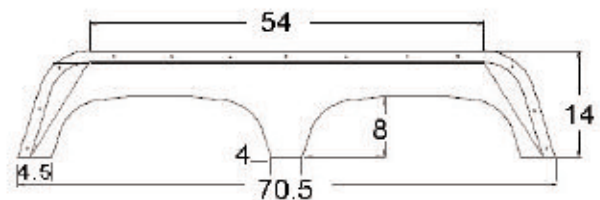
T199
Textured



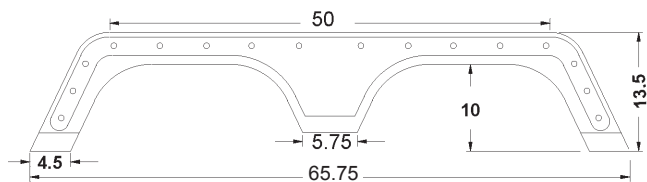
T203
Textured



T207
Textured



T213
Textured

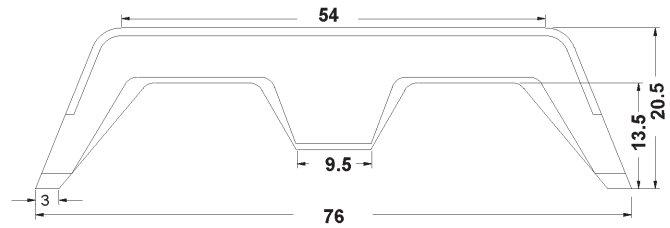


Set up an on-line account @ www.all-rite.com and view pricing on weekends and evenings!

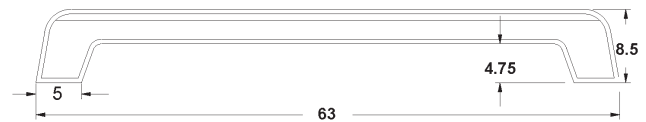


Plastic In-Stock Tandem Fenderskirts

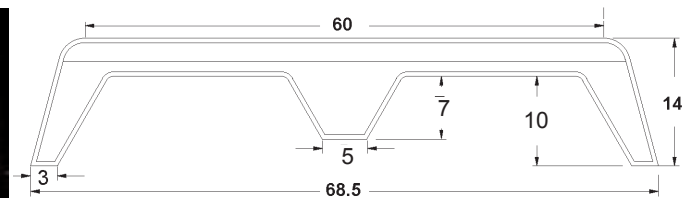
T225
Textured



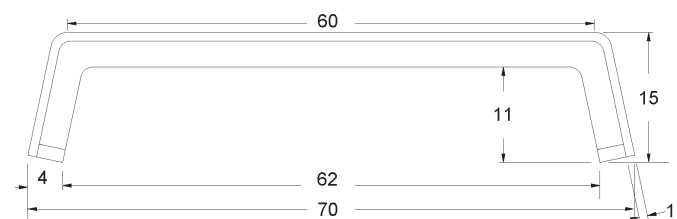
T258
Textured



T260
Textured

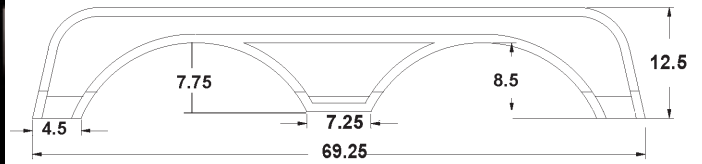


T263
Textured

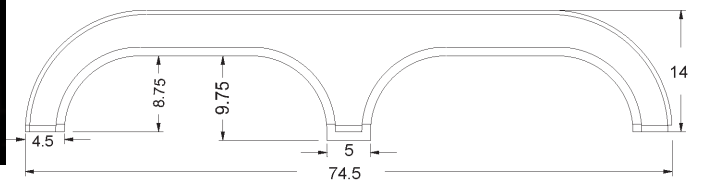


Plastic In-Stock Tandem Fenderskirts

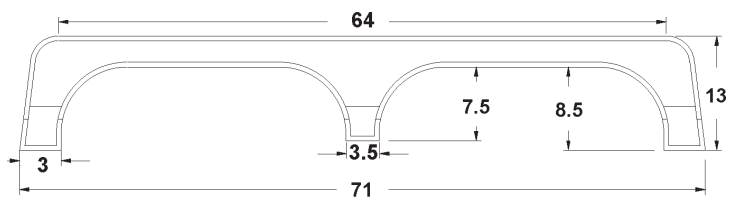
T286
Textured



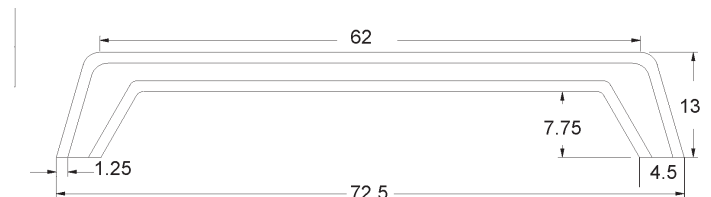
T297
Textured



T316
Textured



T356
Textured



All fenderskirts can also be seen and ordered on-line at www.all-rite.com

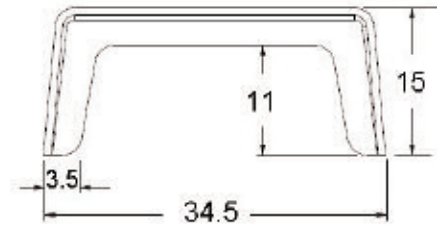


Plastic In-Stock Single Fenderskirts

The following fender skirts are carried in stock and are available for IMMEDIATE shipment from both our California and Georgia locations. All skirts are sold individually or in pairs and are available in Polar White.

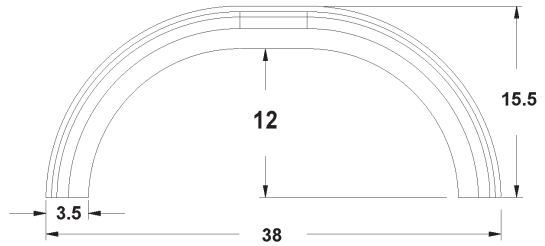
S105

Smooth



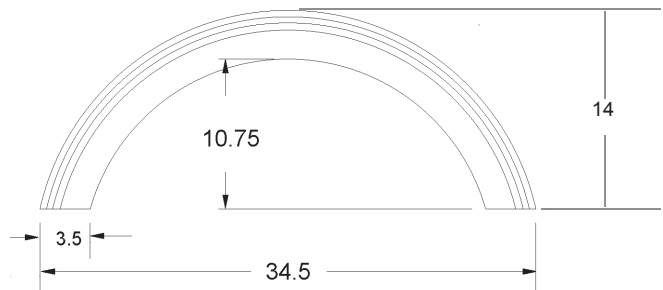
S114

Textured



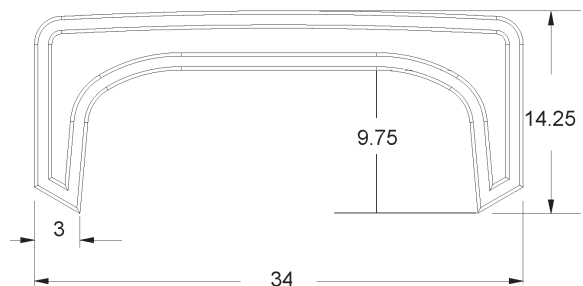
S123

Textured



S127

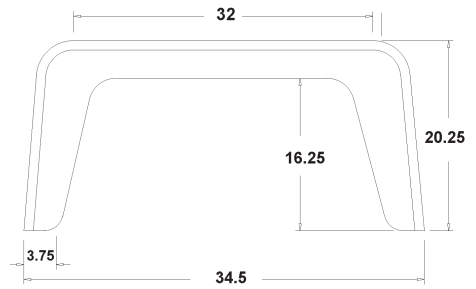
Textured



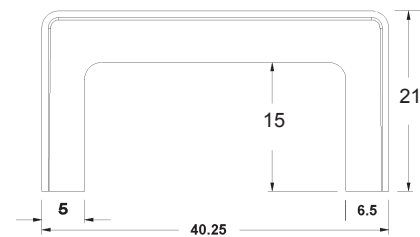


Plastic In-Stock Single Fenderskirts

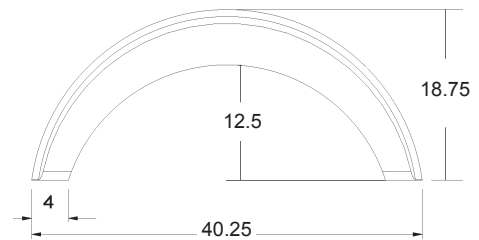
S156
Textured



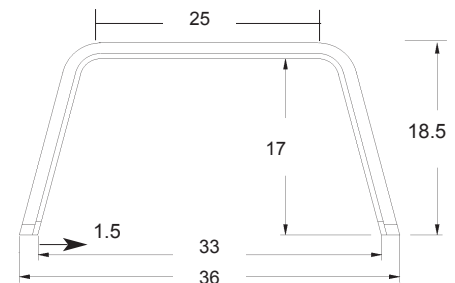
S174
Textured



S191
Smooth



S240
Smooth

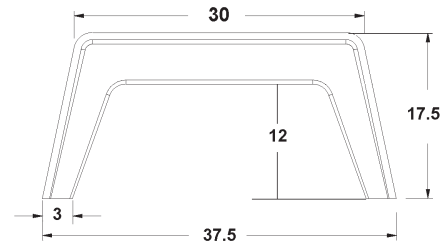


Follow us on Facebook

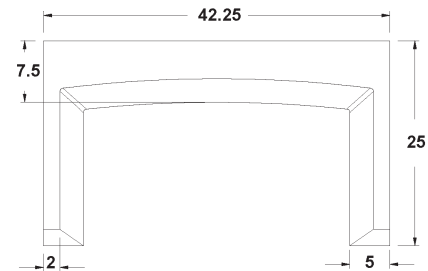


Plastic In-Stock Single Fenderskirts

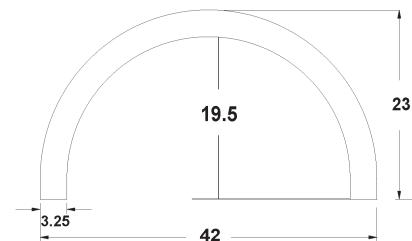
S305
Textured



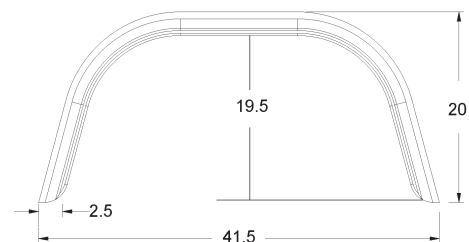
S320
Smooth



S321
Smooth



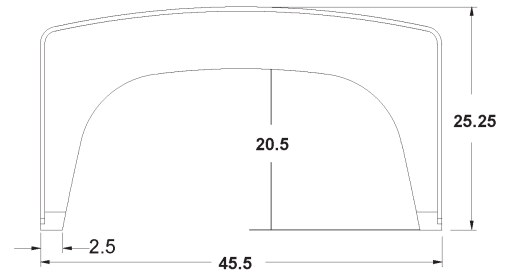
S325
Smooth



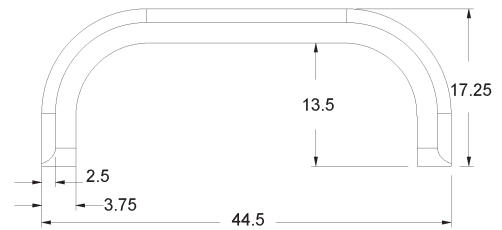


Plastic In-Stock Single Fenderskirts

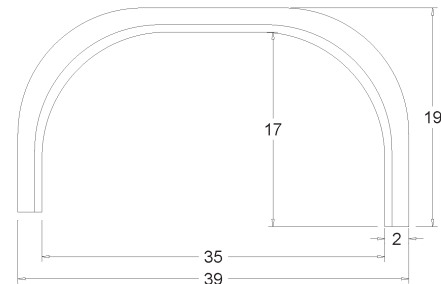
S327
Smooth



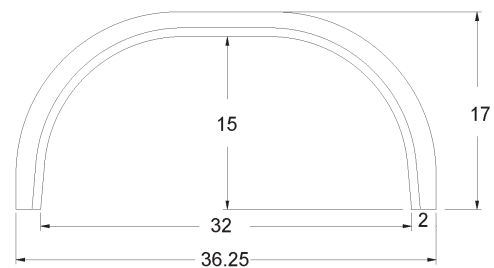
S342
Smooth



S351
Smooth

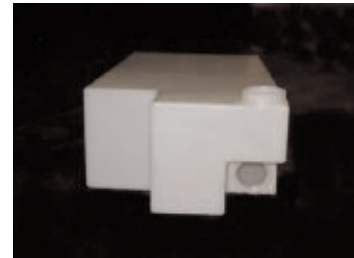
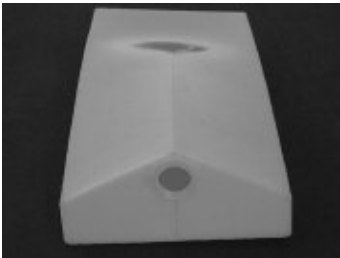
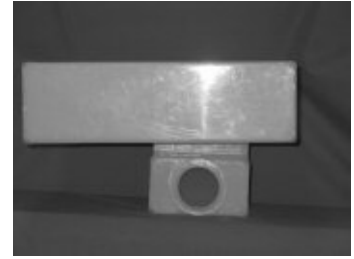
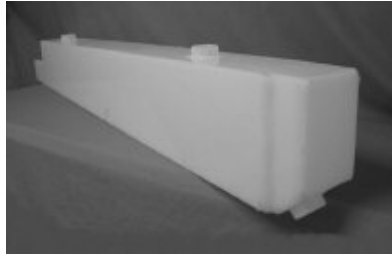


S356
Smooth

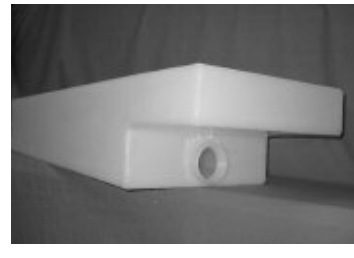
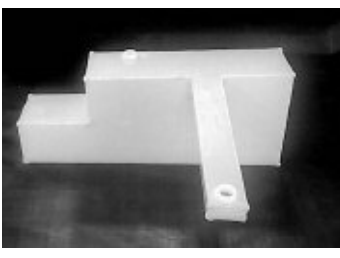
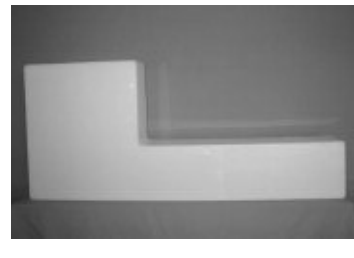
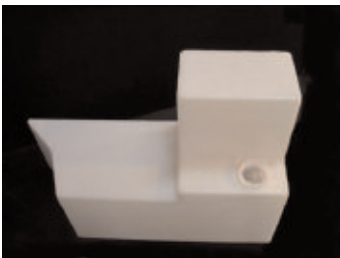


Below are some EXAMPLES of custom holding and water tank shapes that All-Rite can custom manufacture to your exact size specifications. **WE ARE NOT LIMITED TO THESE SHAPES!**

To place an order, simply draw your tank specifications on the following page and your order will be shipped in 48 hours!



NOTE: All-Rite tanks are hand welded and must be supported. We can not build tanks with mounting flanges.



All custom tanks are non-stock and non-returnable



Custom All-Rite Holding Tanks

Please send us a drawing of your custom tank using the space provided below. A customer service representative will call you to confirm the fax and provide you with a quote for your custom tank.

NOTE: All-Rite does not build tanks with mounting flanges!

Please draw in your fittings above. Fitting locations are measured from edge of tank to center of fitting.

NOTE: All-Rite only installs external spinweld FEMALE threaded fittings with a 3/4" rise. See page 78 for other fittings

Fittings:

Qty: _____

- Size: 1/4"
- 3/8"
- 1/2"
- 3/4"

- 1"
- 1 1/2"
- 2"
- 3"

Material:

- 1/4" Poly (up to 60 gallons)
- 3/8" Poly (60+ gallons)

Order Date: _____ **P.O.#:** _____

Customer #: _____ **Ordered By:** _____

Company Name: _____

Address: _____

Phone: _____ **Fax:** _____

Email: _____

All custom tanks are non-stock and non-returnable

Water & Holding Tank Fittings

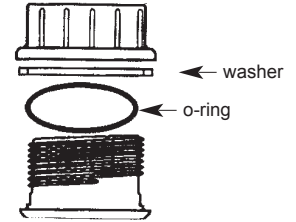
In stock and available for immediate shipment. Call or order on-line at www.all-rite.com!



F700F 1 1/4" (2 1/4" hole)
F701F 1 1/2" (2 1/4" hole)
F703F 3" (3 3/4" hole)
Use with holding tanks only



F702F 2" (2 3/4" hole)
Use with holding tanks only



F705F 1 1/4"
(2 3/4" hole)
Use with F806C or F610L



F100 Monitor Probe
(3/8" hole)



F102 1/2"
Plastic Filter
Replacement for F103



F103 1/2"
Inline Filter



**F704FL
Barb Elbow**
(7/8" hole)



**F704FS
Barb Straight**
(7/8" hole)



**F806C
Barb Straight**
1 1/4"



**F610L
Barb Elbow**
1 1/4"

For your convenience, order on-line at www.all-rite.com evenings and weekends!

PRODUCT INDEX

A

Adhesives.....	15 - 17, 24, 26
All-Rite Windows.....	53 - 58
Alpha Ply Roofing	15
Aluminum Siding.....	6 - 13
Assist Handle.....	63
Awning Rails	32

B

Basement Compartment Doors.....	38
Basement Door Trims	33
Base Trims	31
Battery Door.....	41
Bath Trims.....	33
Battens.....	17
Bay Window	54
Bubble Slider.....	50
Bulb Seals.....	18, 19, 42
Bumpers & Bumper Covers.....	25
Butyl Rubber Tape.....	16, 26
Bunk Ladder.....	63

C

Cable Hatch.....	42
Cam Latch.....	42
Cap Moldings	31
Caulking.....	16
Ceiling Fabric.....	17
Ceiling Grills.....	63
Ceiling Panels.....	17
Citrus Clean Concentrated Cleaner	25
Compartment Doors	36 - 41
Compartment Door Parts.....	42 - 43
Compartment Liners.....	42
Concession Windows	58
Continuous Roof.....	16
Corner Blocks.....	61, 62

D

Deadbolts	50
Door Holdbacks.....	43, 50
Doors	
Compartment.....	36 - 41
Entry.....	48 49
Screen.....	51 - 52
Door Stops.....	43
Drip Rails.....	19, 29

E

Electrical Hatches.....	44 - 46
Electric Fuel Pump.....	27
Emergency Latch.....	60, 61
Entry Doors.....	48 - 49
Entry Door Screens.....	51 - 52
Entry Door Parts.....	43, 47, 50

Escape handles.....	60 - 61
Exit Lever	60
Exit Windows	54 - 57
Exit Vents.....	22
Exterior Hatches.....	44-46

F

Fasteners.....	24
Fender Skirts.....	66 - 75
Fiberglass Siding.....	14
Filler Neck Surrounds.....	27
Flex Roof	14
Floor Registers.....	63
Foam Insulation.....	24
Foam & Rubber Seals.....	18 - 19
Flexible Insert	28

G

Gas Tank Parts.....	27
Generator Doors.....	40
Glazing bead.....	61
Grey Lock.....	42

H

Hatches	
Gas.....	27
Exterior	44-46
Hehr Window Parts.....	61 - 62
Holding Tanks, Custom	76-78

I

Insert Moldings.....	29 - 30
Inserts, Plastic.....	28
Insulating Materials.....	24
Interior Garnish.....	22
Inner Dome.....	22

J

J wrap Aluminum.....	10
----------------------	----

K

Key Locks.....	42
Kinro Window Parts.....	60
Knob Locks.....	50

L

Ladders and Racks.....	63 - 65
Lap Sealant.....	16
Limousine Parts	3 - 6
Locks	
Compartment Door.....	42, 47
Entry Door	47, 50
Tri/Mark.....	47
Louvered Doors.....	41
Luan Paneling.....	17

Please register on-line at www.all-rite.com to access current pricing

PRODUCT INDEX

M

Magnet Catch	50
Metal Patterns	11 - 13
Mini Yoder.....	11
Mobilastic Roof Tape.....	16
Mock Radius Corners.....	41, 42
Moldings & Trims.....	28-33

P

Paneling.....	17
Divider and End Cap	28
Parr Tape.....	26
Plas-T-Cote.....	16
Plastic Fender Skirts, In-Stock.....	66 - 75
Plastic Inserts, Screw Covers & Trims	28-29
Plumbing Parts	78
Propane Door.....	41
Putty Tape.....	26

R

Racks & Ladders.....	63 - 65
Radius Trims.....	32
Radius Window Frames.....	50
Radius Window Glass.....	50
Rain Gutter Spouts.....	31
Replacement Window Screens.....	53
Rivets	24
Rockguards.....	34-35
Roller Catches.....	50
Roofs	
Alpha Ply	15
Aluminum.....	16
Continuous.....	16
Rubber	15
Seamed	16
Super Flex.....	15
Roof Racks.....	63
Roof Vents & Lids.....	22, 23
Roof Tape.....	16, 26
Roof Coatings.....	16
Rubber Seals & Gaskets.....	18- 19

S

Seals	18 - 19
Sealants	16, 26
Screen Door Parts.....	50
Screen Doors.....	51 - 52
Screens, Replacement.....	52 - 53
Screws.....	24
Screw Covers.....	28, 61
Seam Tape.....	17
Seamed Roofs.....	16
Sending Unit.....	27
Sewer Hose Bumper & Cover.....	25

Slideout Trims	32
Skylights.....	20 - 22
Splicing Adhesive.....	16
Split Compartment Doors.....	40 - 41
Stabond Glue.....	26
Sta-Put Glue.....	26
Starbrite Aluminum.....	13
Sticky Stuff Adhesive.....	24

T

Tank Parts	78
Tapes	
Butyl.....	16
Mobilastic	16, 26
Parr	16
Putty.....	26
Underbelly	17
T-Handle Lock.....	42
Threshold Plate.....	50
Torque Windows.....	54, 57
Trims, Plastic.....	28-29, 42
Trim-Lok Trims.....	19
Tri/Mark Locks.....	47
Tuff Ply Flooring	17
Twist Lock.....	42
Trailer Welt	29

U

Underbelly Material.....	17
--------------------------	----

V

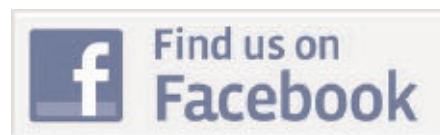
Vent Lids.....	22 - 23
Vinyl Cap.....	29

W

Wall Paneling.....	17
Water Hatches	45 - 46
Water Heater Doors.....	41
Water Tanks, parts.....	76 -78
Weatherstripping.....	18, 19, 50
Weep Hole Covers.....	61
Windows.....	53 - 59
Window Parts.....	60 - 62

Y

Yoder.....	11
------------	----



Please register on-line at www.all-rite.com to access current pricing